

## LPCAT2 rabbit pAb

**Cat#: orb769561 (Manual)**

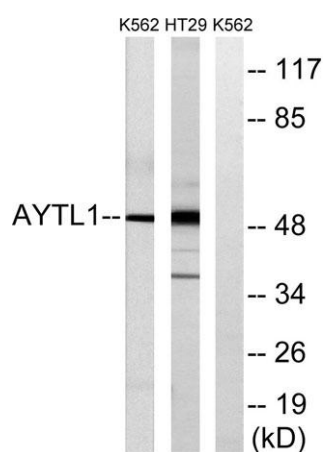
For research use only. Not intended for diagnostic use.

<b>Product Name</b>	LPCAT2 rabbit pAb
<b>Host species</b>	Rabbit
<b>Applications</b>	WB;IHC
<b>Species Cross-Reactivity</b>	Human;Mouse;Rat
<b>Recommended dilutions</b>	WB 1:500-2000;IHC-p 1:50-300
<b>Immunogen</b>	The antiserum was produced against synthesized peptide derived from human LPCAT2. AA range:321-370
<b>Specificity</b>	LPCAT2 Polyclonal Antibody detects endogenous levels of LPCAT2 protein.
<b>Formulation</b>	Liquid in PBS containing 50% glycerol, 0.5% BSA and 0.02% sodium azide..
<b>Storage</b>	Store at -20°C. Avoid repeated freeze-thaw cycles.
<b>Protein Name</b>	Lysophosphatidylcholine acyltransferase 2
<b>Gene Name</b>	LPCAT2
<b>Cellular localization</b>	Endoplasmic reticulum membrane ; Single-pass type II membrane protein . Golgi apparatus membrane ; Single-pass type II membrane protein . Cell membrane ; Single-pass type II membrane protein . Lipid droplet .
<b>Purification</b>	The antibody was affinity-purified from rabbit antiserum by affinity-chromatography using epitope-specific immunogen.

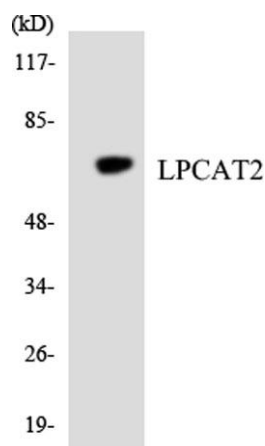
<b>Clonality</b>	Polyclonal
<b>Concentration</b>	1 mg/ml
<b>Observed band</b>	50kD
<b>Human Gene ID</b>	54947
<b>Human Swiss-Prot Number</b>	Q7L5N7
<b>Alternative Names</b>	LPCAT2; AYTL1; Lysophosphatidylcholine acyltransferase 2; LPC acyltransferase 2; LPCAT-2; LysoPC acyltransferase 2; 1-acylglycerophosphocholine O-acyltransferase; 1-alkylglycerophosphocholine O-acyltransferase; Acetyl-CoA:lyso-platelet-ac

### Background

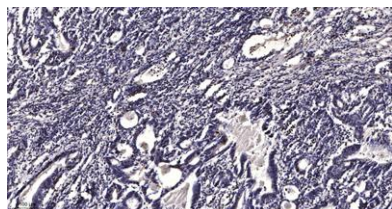
This gene encodes a member of the lysophospholipid acyltransferase family. The encoded enzyme may function in two ways: to catalyze the biosynthesis of platelet-activating factor (1-O-alkyl-2-acetyl-sn-glycero-3-phosphocholine) from 1-O-alkyl-sn-glycero-3-phosphocholine, and to catalyze the synthesis of glycerophospholipid precursors from arachidonyl-CoA and lysophosphatidylcholine. The encoded protein may function in membrane biogenesis and production of platelet-activating factor in inflammatory cells. The enzyme may localize to the endoplasmic reticulum and the Golgi. [provided by RefSeq, Feb 2009],



Western blot analysis of lysates from K562 and HT-29 cells, using LPCAT2 Antibody. The lane on the right is blocked with the synthesized peptide.



Western blot analysis of the lysates from HT-29 cells using LPCAT2 antibody.



Immunohistochemical analysis of paraffin-embedded human Gastric adenocarcinoma. 1, Antibody was diluted at 1:200(4° overnight). 2, Tris-EDTA,pH9.0 was used for antigen retrieval. 3,Secondary antibody was diluted at 1:200(room temperature, 45min).