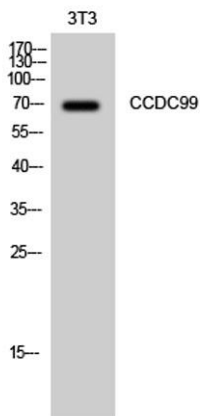


CCDC99 rabbit pAb**Cat#: orb769557 (Manual)**

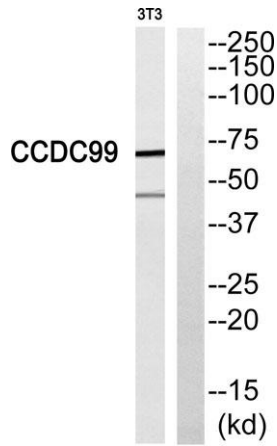
For research use only. Not intended for diagnostic use.

Product Name	CCDC99 rabbit pAb
Host species	Rabbit
Applications	WB;ELISA
Species Cross-Reactivity	Human;Rat;Mouse;
Recommended dilutions	Western Blot: 1/500 - 1/2000. ELISA: 1/40000. Not yet tested in other applications.
Immunogen	The antiserum was produced against synthesized peptide derived from human CCDC99. AA range:541-590
Specificity	CCDC99 Polyclonal Antibody detects endogenous levels of CCDC99 protein.
Formulation	Liquid in PBS containing 50% glycerol, 0.5% BSA and 0.02% sodium azide..
Storage	Store at -20°C. Avoid repeated freeze-thaw cycles.
Protein Name	Protein Spindly
Gene Name	CCDC99
Cellular localization	Cytoplasm, cytoskeleton, microtubule organizing center, centrosome. Chromosome, centromere, kinetochore. Nucleus. Cytoplasm, cytoskeleton, spindle pole. Localizes to the nucleus in interphase and to the kinetochore in early prometaphase. Relocalizes to the mitotic spindle pole before metaphase and is subsequently lost from the spindle poles after chromosome congression is completed. Removal of this protein from the kinetochore requires the dynein/dynactin complex.

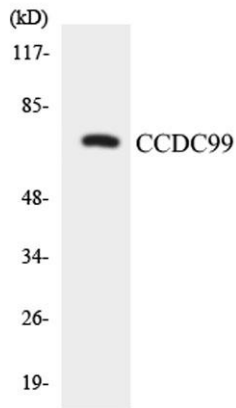
Purification	The antibody was affinity-purified from rabbit antiserum by affinity-chromatography using epitope-specific immunogen.
Clonality	Polyclonal
Concentration	1 mg/ml
Observed band	70kD
Human Gene ID	54908
Human Swiss-Prot Number	Q96EA4
Alternative Names	CCDC99; Protein Spindly; hSpindly; Arsenite-related gene 1 protein; Coiled-coil domain-containing protein 99; Rhabdomyosarcoma antigen MU-RMS-40.4A
Background	This gene encodes a coiled-coil domain-containing protein that functions in mitotic spindle formation and chromosome segregation. The encoded protein plays a role in coordinating microtubule attachment by promoting recruitment of dynein proteins, and in mitotic checkpoint signaling. [provided by RefSeq, Jul 2016],



Western Blot analysis of 3T3 cells using CCDC99 Polyclonal Antibody diluted at 1:1000



Western blot analysis of CCDC99 Antibody. The lane on the right is blocked with the CCDC99 peptide.



Western blot analysis of the lysates from K562 cells using CCDC99 antibody.