

CDKAL1 rabbit pAb**Cat#: orb769556 (Manual)**

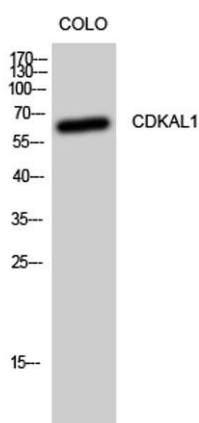
For research use only. Not intended for diagnostic use.

Product Name	CDKAL1 rabbit pAb
Host species	Rabbit
Applications	WB;ELISA
Species Cross-Reactivity	Human;Rat
Recommended dilutions	Western Blot: 1/500 - 1/2000. ELISA: 1/40000. Not yet tested in other applications.
Immunogen	The antiserum was produced against synthesized peptide derived from human CDKAL. AA range:10-59
Specificity	CDKAL1 Polyclonal Antibody detects endogenous levels of CDKAL1 protein.
Formulation	Liquid in PBS containing 50% glycerol, 0.5% BSA and 0.02% sodium azide..
Storage	Store at -20°C. Avoid repeated freeze-thaw cycles.
Protein Name	Threonylcarbamoyladenosine tRNA methylthiotransferase
Gene Name	CDKAL1
Cellular localization	Endoplasmic reticulum membrane ; Single-pass membrane protein . Is a tail-anchored protein that exploits the TCR40 pathway for insertion into the endoplasmic reticulum. .
Purification	The antibody was affinity-purified from rabbit antiserum by affinity-chromatography using epitope-specific immunogen.

Clonality	Polyclonal
Concentration	1 mg/ml
Observed band	65kD
Human Gene ID	54901
Human Swiss-Prot Number	Q5VV42
Alternative Names	CDKAL1; Threonylcarbamoyladenosine tRNA methylthiotransferase; CDK5 regulatory subunit-associated protein 1-like 1; tRNA-t(6)A37 methylthiotransferase

Background

The protein encoded by this gene is a member of the methylthiotransferase family. The function of this gene is not known. Genome-wide association studies have linked single nucleotide polymorphisms in an intron of this gene with susceptibility to type 2 diabetes. [provided by RefSeq, May 2010],



Western Blot analysis of CoLo cells using CDKAL1 Polyclonal Antibody