

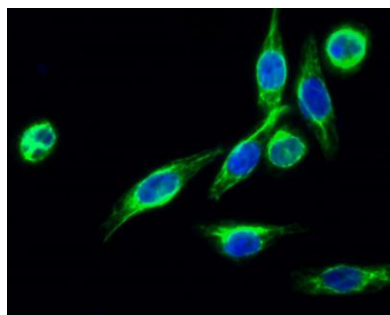
MARCH5 rabbit pAb

Cat#: orb769548 (Manual)

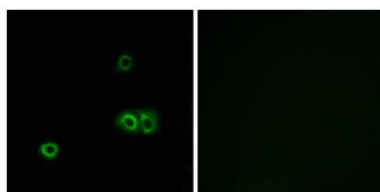
For research use only. Not intended for diagnostic use.

| | |
|---------------------------------|---|
| Product Name | MARCH5 rabbit pAb |
| Host species | Rabbit |
| Applications | IF;WB;ELISA |
| Species Cross-Reactivity | Human;Mouse;Rat |
| Recommended dilutions | WB 1:500-2000 Immunofluorescence: 1/200 - 1/1000. ELISA: 1/40000. Not yet tested in other applications. |
| Immunogen | The antiserum was produced against synthesized peptide derived from human MARCH5. AA range:21-70 |
| Specificity | MARCH5 Polyclonal Antibody detects endogenous levels of 40607 protein. |
| Formulation | Liquid in PBS containing 50% glycerol, 0.5% BSA and 0.02% sodium azide.. |
| Storage | Store at -20°C. Avoid repeated freeze-thaw cycles. |
| Protein Name | E3 ubiquitin-protein ligase MARCH5 |
| Gene Name | MARCH5 |
| Cellular localization | Mitochondrion outer membrane ; Multi-pass membrane protein . Endoplasmic reticulum membrane ; Multi-pass membrane protein . Authors show that the protein can be detected in endoplasmic reticulum (PubMed:14722266). Authors (PubMed:16874301) show its presen |
| Purification | The antibody was affinity-purified from rabbit antiserum by affinity-chromatography using epitope-specific immunogen. |

| | |
|--------------------------------|---|
| Clonality | Polyclonal |
| Concentration | 1 mg/ml |
| Observed band | 37kD |
| Human Gene ID | 54708 |
| Human Swiss-Prot Number | Q9NX47 |
| Alternative Names | MARCH5; RNF153; E3 ubiquitin-protein ligase MARCH5; Membrane-associated RING finger protein 5; Membrane-associated RING-CH protein V; MARCH-V; Mitochondrial ubiquitin ligase; MITOL; RING finger protein 153 |
| Background | MARCH5 is a ubiquitin ligase of the mitochondrial outer membrane that plays a role in the control of mitochondrial morphology by regulating mitofusin-2 (MFN2; MIM 608507) and DRP1 (DNM1L; MIM 603850) (Nakamura et al., 2006 [PubMed 16936636]).[supplied by OMIM, Mar 2008], |



Immunofluorescence analysis of HeLa cell. 1, MARCH5 Polyclonal Antibody (green) was diluted at 1:200 (4° overnight). 2, Goat Anti Rabbit Alexa Fluor 488 Catalog: RS3211 was diluted at 1:1000 (room temperature, 50min). 3 DAPI (blue) 10min.



Immunofluorescence analysis of A549 cells, using MARCH5 Antibody. The picture on the right is blocked with the synthesized peptide.



Explore. Bioreagents.

www.biorbyt.com