

Rrn3 rabbit pAb

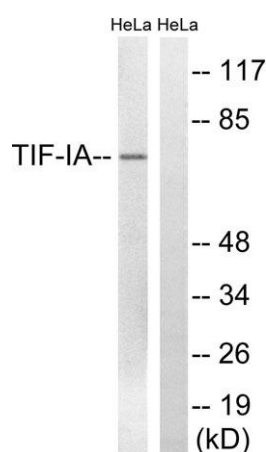
Cat#: orb769547 (Manual)

For research use only. Not intended for diagnostic use.

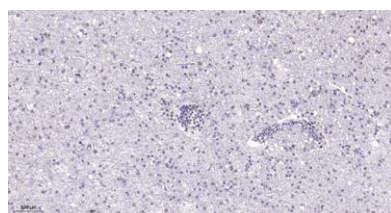
Product Name	Rrn3 rabbit pAb
Host species	Rabbit
Applications	WB;IHC;IF;ELISA
Species Cross-Reactivity	Human;Rat;Mouse;
Recommended dilutions	Western Blot: 1/500 - 1/2000. Immunohistochemistry: 1/100 - 1/300. ELISA: 1/5000. Not yet tested in other applications.
Immunogen	The antiserum was produced against synthesized peptide derived from human TIF-IA. AA range:602-651
Specificity	Rrn3 Polyclonal Antibody detects endogenous levels of Rrn3 protein.
Formulation	Liquid in PBS containing 50% glycerol, 0.5% BSA and 0.02% sodium azide..
Storage	Store at -20°C. Avoid repeated freeze-thaw cycles.
Protein Name	RNA polymerase I-specific transcription initiation factor RRN3
Gene Name	RRN3
Cellular localization	Nucleus, nucleolus .
Purification	The antibody was affinity-purified from rabbit antiserum by affinity-chromatography using epitope-specific immunogen.
Clonality	Polyclonal

Concentration	1 mg/ml
Observed band	70kD
Human Gene ID	54700
Human Swiss-Prot Number	Q9NYV6
Alternative Names	RRN3; TIFIA; RNA polymerase I-specific transcription initiation factor RRN3; Transcription initiation factor IA; TIF-IA

Background function:Required for efficient transcription initiation by RNA polymerase I.,similarity:Belongs to the RRN3 family.,



Western blot analysis of lysates from HeLa cells, treated with calyculinA 50ng/ml 30', using TIF-IA Antibody. The lane on the right is blocked with the synthesized peptide.



Immunohistochemical analysis of paraffin-embedded human brain. 1, Tris-EDTA,pH9.0 was used for antigen retrieval. 2 Antibody was diluted at 1:200(4° overnight.3,Secondary antibody was diluted at 1:200(room temperature, 45min).