

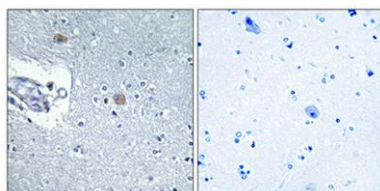
## CSGlcA-T rabbit pAb

**Cat#: orb769531 (Manual)**

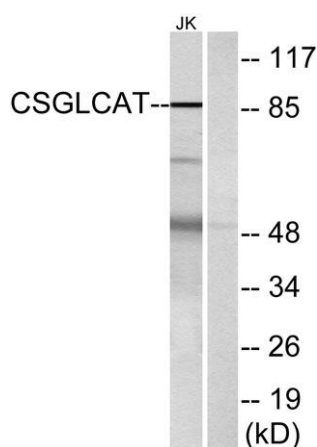
For research use only. Not intended for diagnostic use.

<b>Product Name</b>	CSGlcA-T rabbit pAb
<b>Host species</b>	Rabbit
<b>Applications</b>	WB;IHC;IF;ELISA
<b>Species Cross-Reactivity</b>	Human;Rat;Mouse;
<b>Recommended dilutions</b>	Western Blot: 1/500 - 1/2000. Immunohistochemistry: 1/100 - 1/300. ELISA: 1/40000. Not yet tested in other applications.
<b>Immunogen</b>	The antiserum was produced against synthesized peptide derived from human CSGLCAT. AA range:31-80
<b>Specificity</b>	CSGlcA-T Polyclonal Antibody detects endogenous levels of CSGlcA-T protein.
<b>Formulation</b>	Liquid in PBS containing 50% glycerol, 0.5% BSA and 0.02% sodium azide..
<b>Storage</b>	Store at -20°C. Avoid repeated freeze-thaw cycles.
<b>Protein Name</b>	Chondroitin sulfate glucuronyltransferase
<b>Gene Name</b>	CHPF2
<b>Cellular localization</b>	Golgi apparatus, Golgi stack membrane ; Single-pass type II membrane protein .
<b>Purification</b>	The antibody was affinity-purified from rabbit antiserum by affinity-chromatography using epitope-specific immunogen.
<b>Clonality</b>	Polyclonal

<b>Concentration</b>	1 mg/ml
<b>Observed band</b>	86kD
<b>Human Gene ID</b>	54480
<b>Human Swiss-Prot Number</b>	Q9P2E5
<b>Alternative Names</b>	CHPF2; CHSY3; CSGLCAT; KIAA1402; Chondroitin sulfate glucuronyltransferase; CSGlcA-T; Chondroitin glucuronyltransferase; Chondroitin polymerizing factor 2; ChPF-2; Chondroitin synthase 3; ChSy-3; N-acetylgalactosaminyl-proteoglycan 3-beta-g
<b>Background</b>	CHPF2 (Chondroitin Polymerizing Factor 2) is a Protein Coding gene. Among its related pathways are Defective B3GAT3 causes JDSSDHD and Metabolism. GO annotations related to this gene include transferase activity, transferring glycosyl groups and N-acetylgalactosaminyl-proteoglycan 3-beta-glucuronosyltransferase activity. An important paralog of this gene is B4GALNT4.



**Immunohistochemical analysis of paraffin-embedded Human brain.** Antibody was diluted at 1:100(4° overnight). High-pressure and temperature Tris-EDTA,pH8.0 was used for antigen retrieval. Negative ctrl (right) obtained from antibody was pre-absorbed by i



**Western blot analysis of lysates from Jurkat cells, using CSGLCAT Antibody.** The lane on the right is blocked with the synthesized peptide.