

NLE1 rabbit pAb

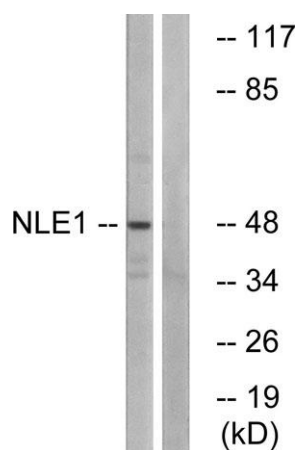
Cat#: orb769530 (Manual)

For research use only. Not intended for diagnostic use.

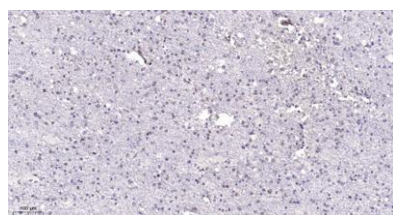
Product Name	NLE1 rabbit pAb
Host species	Rabbit
Applications	WB;IHC;IF;ELISA
Species Cross-Reactivity	Human;Monkey
Recommended dilutions	Western Blot: 1/500 - 1/2000. Immunohistochemistry: 1/100 - 1/300. ELISA: 1/40000. Not yet tested in other applications.
Immunogen	The antiserum was produced against synthesized peptide derived from human NLE1. AA range:301-350
Specificity	NLE1 Polyclonal Antibody detects endogenous levels of NLE1 protein.
Formulation	Liquid in PBS containing 50% glycerol, 0.5% BSA and 0.02% sodium azide..
Storage	Store at -20°C. Avoid repeated freeze-thaw cycles.
Protein Name	Notchless protein homolog 1
Gene Name	NLE1
Cellular localization	Nucleus, nucleolus .
Purification	The antibody was affinity-purified from rabbit antiserum by affinity-chromatography using epitope-specific immunogen.
Clonality	Polyclonal

Concentration	1 mg/ml
Observed band	48kD
Human Gene ID	54475
Human Swiss-Prot Number	Q9NVX2
Alternative Names	NLE1; HUSSY-07; Notchless protein homolog 1

Background similarity:Contains 8 WD repeats.,



Western blot analysis of lysates from COS cells, using NLE1 Antibody. The lane on the right is blocked with the synthesized peptide.



Immunohistochemical analysis of paraffin-embedded human brain. 1, Tris-EDTA, pH 9.0 was used for antigen retrieval. 2 Antibody was diluted at 1:200 (4° overnight). 3, Secondary antibody was diluted at 1:200 (room temperature, 45 min).