

T2R5 rabbit pAb

Cat#: orb769528 (Manual)

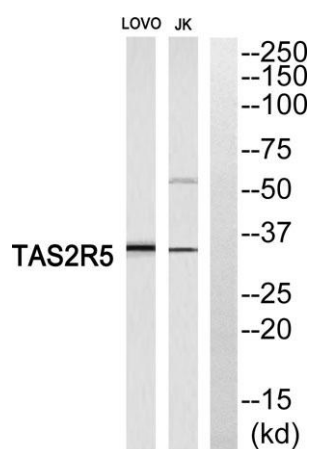
For research use only. Not intended for diagnostic use.

Product Name	T2R5 rabbit pAb
Host species	Rabbit
Applications	WB;ELISA
Species Cross-Reactivity	Human;Rat;Mouse;
Recommended dilutions	Western Blot: 1/500 - 1/2000. ELISA: 1/5000. Not yet tested in other applications.
Immunogen	The antiserum was produced against synthesized peptide derived from human TAS2R5. AA range:178-227
Specificity	T2R5 Polyclonal Antibody detects endogenous levels of T2R5 protein.
Formulation	Liquid in PBS containing 50% glycerol, 0.5% BSA and 0.02% sodium azide..
Storage	Store at -20°C. Avoid repeated freeze-thaw cycles.
Protein Name	Taste receptor type 2 member 5
Gene Name	TAS2R5
Cellular localization	Membrane; Multi-pass membrane protein.
Purification	The antibody was affinity-purified from rabbit antiserum by affinity-chromatography using epitope-specific immunogen.
Clonality	Polyclonal

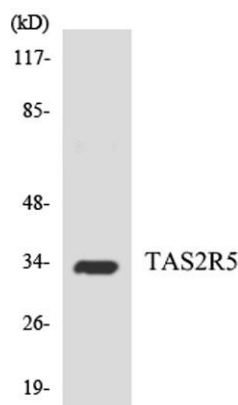
Concentration	1 mg/ml
Observed band	35kD
Human Gene ID	54429
Human Swiss-Prot Number	Q9NYW4
Alternative Names	TAS2R5; Taste receptor type 2 member 5; T2R5

Background

This gene encodes a bitter taste receptor; bitter taste receptors are members of the G protein-coupled receptor superfamily and are specifically expressed by taste receptor cells of the tongue and palate epithelia. Each of these apparently intronless taste receptor genes encodes a 7-transmembrane receptor protein, functioning as a bitter taste receptor. This gene is clustered with another 3 candidate taste receptor genes on chromosome 7 and is genetically linked to loci that influence bitter perception. [provided by RefSeq, Jul 2008],



Western blot analysis of TAS2R5 Antibody. The lane on the right is blocked with the TAS2R5 peptide.



Western blot analysis of the lysates from HepG2 cells using TAS2R5 antibody.



Explore. Bioreagents.

www.biorbyt.com