

GPR173 rabbit pAb**Cat#: orb769522 (Manual)**

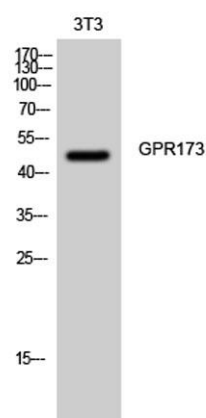
For research use only. Not intended for diagnostic use.

Product Name	GPR173 rabbit pAb
Host species	Rabbit
Applications	WB;IF;ELISA
Species Cross-Reactivity	Human;Mouse;Rat
Recommended dilutions	Western Blot: 1/500 - 1/2000. Immunofluorescence: 1/200 - 1/1000. ELISA: 1/10000. Not yet tested in other applications.
Immunogen	The antiserum was produced against synthesized peptide derived from human GPR173. AA range:251-300
Specificity	GPR173 Polyclonal Antibody detects endogenous levels of GPR173 protein.
Formulation	Liquid in PBS containing 50% glycerol, 0.5% BSA and 0.02% sodium azide..
Storage	Store at -20°C. Avoid repeated freeze-thaw cycles.
Protein Name	Probable G-protein coupled receptor 173
Gene Name	GPR173
Cellular localization	Cell membrane ; Multi-pass membrane protein .
Purification	The antibody was affinity-purified from rabbit antiserum by affinity-chromatography using epitope-specific immunogen.
Clonality	Polyclonal

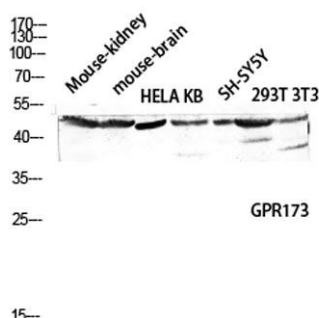
Concentration	1 mg/ml
Observed band	47kD
Human Gene ID	54328
Human Swiss-Prot Number	Q9NS66
Alternative Names	GPR173; SREB3; Probable G-protein coupled receptor 173; Super conserved receptor expressed in brain 3

Background

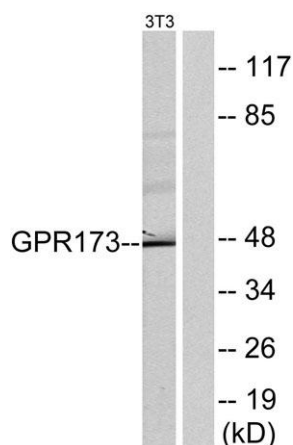
This gene encodes a member of the G-protein coupled receptor 1 family. This protein contains 7 transmembrane domains and conserved cysteine residues. [provided by RefSeq, Nov 2009],



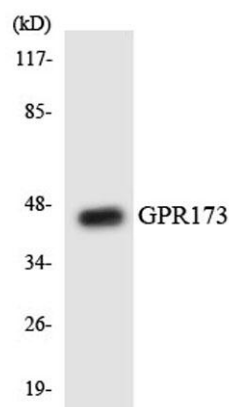
Western Blot analysis of 3T3 cells using GPR173 Polyclonal Antibody diluted at 1:2000



Western blot analysis of Mouse-kidney mouse-brain HELA KB SH-SY5Y 293T 3T3 lysis using GPR173 antibody. Antibody was diluted at 1:2000



Western blot analysis of lysates from NIH/3T3 cells, using GPR173 Antibody. The lane on the right is blocked with the synthesized peptide.



Western blot analysis of the lysates from COLO205 cells using GPR173 antibody.