

CLIC6 rabbit pAb

Cat#: orb769511 (Manual)

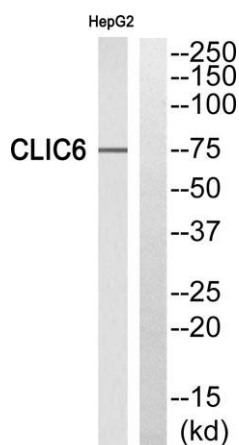
For research use only. Not intended for diagnostic use.

Product Name	CLIC6 rabbit pAb
Host species	Rabbit
Applications	WB;ELISA
Species Cross-Reactivity	Human;Rat;Mouse;
Recommended dilutions	Western Blot: 1/500 - 1/2000. ELISA: 1/40000. Not yet tested in other applications.
Immunogen	The antiserum was produced against synthesized peptide derived from human CLIC6. AA range:411-460
Specificity	CLIC6 Polyclonal Antibody detects endogenous levels of CLIC6 protein.
Formulation	Liquid in PBS containing 50% glycerol, 0.5% BSA and 0.02% sodium azide..
Storage	Store at -20°C. Avoid repeated freeze-thaw cycles.
Protein Name	Chloride intracellular channel protein 6
Gene Name	CLIC6
Cellular localization	Cytoplasm . Cell membrane ; Single-pass membrane protein . Predominantly cytoplasmic. Upon chloride ion efflux from the cell, it is translocated to the plasma membrane (By similarity). .
Purification	The antibody was affinity-purified from rabbit antiserum by affinity-chromatography using epitope-specific immunogen.

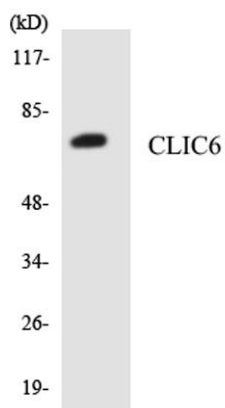
Clonality	Polyclonal
Concentration	1 mg/ml
Observed band	75kD
Human Gene ID	54102
Human Swiss-Prot Number	Q96NY7
Alternative Names	CLIC6; CLIC1L; Chloride intracellular channel protein 6; Parchorin

Background

chloride intracellular channel 6(CLIC6) Homo sapiens This gene encodes a member of the chloride intracellular channel family of proteins. The gene is part of a large triplicated region found on chromosomes 1, 6, and 21. Alternative splicing results in multiple transcript variants encoding different isoforms. [provided by RefSeq, Nov 2015],



Western blot analysis of CLIC6 Antibody. The lane on the right is blocked with the CLIC6 peptide.



Western blot analysis of the lysates from HepG2 cells using CLIC6 antibody.



Explore. Bioreagents.

www.biorbyt.com