

## Rab 24 rabbit pAb

**Cat#: orb769505 (Manual)**

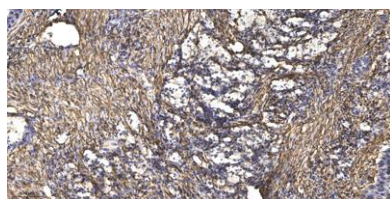
For research use only. Not intended for diagnostic use.

<b>Product Name</b>	Rab 24 rabbit pAb
<b>Host species</b>	Rabbit
<b>Applications</b>	IHC;IF;ELISA
<b>Species Cross-Reactivity</b>	Human;Mouse;Rat
<b>Recommended dilutions</b>	WB 1:500-2000 ,Immunohistochemistry: 1/100 - 1/300. ELISA: 1/10000. Not yet tested in other applications.
<b>Immunogen</b>	Synthesized peptide derived from Rab 24 . at AA range: 90-170
<b>Specificity</b>	Rab 24 Polyclonal Antibody detects endogenous levels of Rab 24 protein.
<b>Formulation</b>	Liquid in PBS containing 50% glycerol, 0.5% BSA and 0.02% sodium azide..
<b>Storage</b>	Store at -20°C. Avoid repeated freeze-thaw cycles.
<b>Protein Name</b>	Ras-related protein Rab-24
<b>Gene Name</b>	RAB24
<b>Cellular localization</b>	Cytoplasm, cytosol . Membrane ; Lipid-anchor . Only about 20-25% is recovered in the particulate fraction. .
<b>Purification</b>	The antibody was affinity-purified from rabbit antiserum by affinity-chromatography using       epitope-specific immunogen.
<b>Clonality</b>	Polyclonal

<b>Concentration</b>	1 mg/ml
<b>Observed band</b>	
<b>Human Gene ID</b>	53917
<b>Human Swiss-Prot Number</b>	Q969Q5
<b>Alternative Names</b>	RAB24; Ras-related protein Rab-24

**Background**

RAB24 is a small GTPase of the Rab subfamily of Ras-related proteins that regulate intracellular protein trafficking (Olkonen et al., 1993 [PubMed 8126105]).[supplied by OMIM, Aug 2009],



**Immunohistochemical analysis of paraffin-embedded human Squamous cell carcinoma of lung. 1, Antibody was diluted at 1:200(4° overnight). 2, Tris-EDTA,pH9.0 was used for antigen retrieval. 3,Secondary antibody was diluted at 1:200(room temperature, 45min).**