

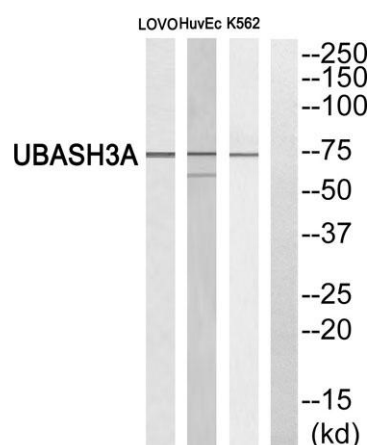
TULA rabbit pAb**Cat#: orb769479 (Manual)**

For research use only. Not intended for diagnostic use.

Product Name	TULA rabbit pAb
Host species	Rabbit
Applications	WB;ELISA
Species Cross-Reactivity	Human;Rat;Mouse;
Recommended dilutions	Western Blot: 1/500 - 1/2000. ELISA: 1/5000. Not yet tested in other applications.
Immunogen	The antiserum was produced against synthesized peptide derived from human UBASH3A. AA range:311-360
Specificity	TULA Polyclonal Antibody detects endogenous levels of TULA protein.
Formulation	Liquid in PBS containing 50% glycerol, 0.5% BSA and 0.02% sodium azide..
Storage	Store at -20°C. Avoid repeated freeze-thaw cycles.
Protein Name	Ubiquitin-associated and SH3 domain-containing protein A
Gene Name	UBASH3A
Cellular localization	Cytoplasm. Nucleus.
Purification	The antibody was affinity-purified from rabbit antiserum by affinity-chromatography using epitope-specific immunogen.
Clonality	Polyclonal

Concentration	1 mg/ml
Observed band	75kD
Human Gene ID	53347
Human Swiss-Prot Number	P57075
Alternative Names	UBASH3A; STS2; Ubiquitin-associated and SH3 domain-containing protein A; Cbl-interacting protein 4; CLIP4; Suppressor of T-cell receptor signaling 2; STS-2; T-cell ubiquitin ligand 1; TULA-1

Background This gene encodes one of two family members belonging to the T-cell ubiquitin ligand (TULA) family. Both family members can negatively regulate T-cell signaling. This family member can facilitate growth factor withdrawal-induced apoptosis in T cells, which may occur via its interaction with AIF, an apoptosis-inducing factor. Alternative splicing of this gene results in multiple transcript variants. [provided by RefSeq, Aug 2011],



Western blot analysis of UBASH3A Antibody. The lane on the right is blocked with the UBASH3A peptide.