

**tPA rabbit pAb****Cat#: orb769476 (Manual)**

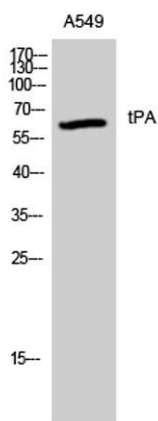
For research use only. Not intended for diagnostic use.

<b>Product Name</b>	tPA rabbit pAb
<b>Host species</b>	Rabbit
<b>Applications</b>	WB;ELISA
<b>Species Cross-Reactivity</b>	Human;Mouse;Rat
<b>Recommended dilutions</b>	Western Blot: 1/500 - 1/2000. ELISA: 1/10000. Not yet tested in other applications.
<b>Immunogen</b>	The antiserum was produced against synthesized peptide derived from human tPA. AA range:38-87
<b>Specificity</b>	tPA Polyclonal Antibody detects endogenous levels of tPA protein.
<b>Formulation</b>	Liquid in PBS containing 50% glycerol, 0.5% BSA and 0.02% sodium azide..
<b>Storage</b>	Store at -20°C. Avoid repeated freeze-thaw cycles.
<b>Protein Name</b>	Tissue-type plasminogen activator
<b>Gene Name</b>	PLAT
<b>Cellular localization</b>	Secreted, extracellular space.
<b>Purification</b>	The antibody was affinity-purified from rabbit antiserum by affinity-chromatography using epitope-specific immunogen.
<b>Clonality</b>	Polyclonal

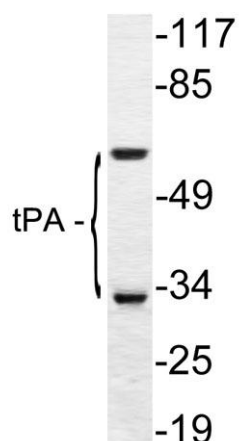
<b>Concentration</b>	1 mg/ml
<b>Observed band</b>	63kD
<b>Human Gene ID</b>	5327
<b>Human Swiss-Prot Number</b>	P00750
<b>Alternative Names</b>	PLAT; Tissue-type plasminogen activator; t-PA; t-plasminogen activator; tPA; Alteplase; Reteplase

### Background

This gene encodes tissue-type plasminogen activator, a secreted serine protease that converts the proenzyme plasminogen to plasmin, a fibrinolytic enzyme. The encoded preproprotein is proteolytically processed by plasmin or trypsin to generate heavy and light chains. These chains associate via disulfide linkages to form the heterodimeric enzyme. This enzyme plays a role in cell migration and tissue remodeling. Increased enzymatic activity causes hyperfibrinolysis, which manifests as excessive bleeding, while decreased activity leads to hypofibrinolysis, which can result in thrombosis or embolism. Alternative splicing of this gene results in multiple transcript variants, at least one of which encodes an isoform that is proteolytically processed. [provided by RefSeq, Jan 2016],



**Western Blot analysis of A549 cells using tPA Polyclonal Antibody. Secondary antibody(catalog#:RS0002) was diluted at 1:20000**



Western blot analysis of lysate from A549 cells, using tPA antibody.