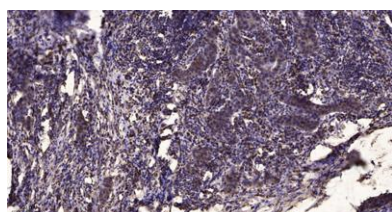


PITP α rabbit pAb**Cat#: orb769471 (Manual)**

For research use only. Not intended for diagnostic use.

Product Name	PITP α rabbit pAb
Host species	Rabbit
Applications	IHC;IF;ELISA
Species Cross-Reactivity	Human;Mouse;Rat
Recommended dilutions	Immunohistochemistry: 1/100 - 1/300. ELISA: 1/10000. Not yet tested in other applications.
Immunogen	Synthesized peptide derived from PITP α . at AA range: 160-240
Specificity	PITP α Polyclonal Antibody detects endogenous levels of PITP α protein.
Formulation	Liquid in PBS containing 50% glycerol, 0.5% BSA and 0.02% sodium azide..
Storage	Store at -20°C. Avoid repeated freeze-thaw cycles.
Protein Name	Phosphatidylinositol transfer protein alpha isoform
Gene Name	PITPNA
Cellular localization	Cytoplasm . Nucleus .
Purification	The antibody was affinity-purified from rabbit antiserum by affinity-chromatography using epitope-specific immunogen.
Clonality	Polyclonal

Concentration	1 mg/ml
Observed band	
Human Gene ID	5306
Human Swiss-Prot Number	Q00169
Alternative Names	PITPNA; PITPN; Phosphatidylinositol transfer protein alpha isoform; PI-TP-alpha; PtdIns transfer protein alpha; PtdInsTP alpha
Background	This gene encodes a member of a family of lipid-binding proteins that transfer molecules of phosphatidylinositol or phosphatidylcholine between membrane surfaces. The protein is implicated in phospholipase C signaling and in the production of phosphatidylinositol 3,4,5-trisphosphate (PIP3) by phosphoinositide-3-kinase.[provided by RefSeq, Sep 2009],



Immunohistochemical analysis of paraffin-embedded human Breast cancer. 1, Antibody was diluted at 1:200(4° overnight). 2, Tris-EDTA,pH9.0 was used for antigen retrieval. 3,Secondary antibody was diluted at 1:200(room temperature, 45min).