

PI 3-Kinase p110 γ rabbit pAb**Cat#: orb769465 (Manual)**

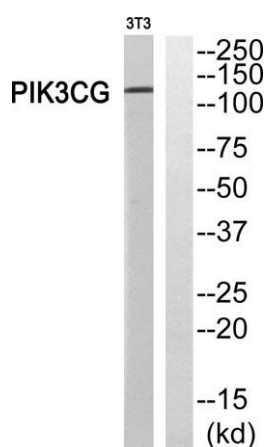
For research use only. Not intended for diagnostic use.

Product Name	PI 3-Kinase p110 γ rabbit pAb
Host species	Rabbit
Applications	WB;IHC;IF;ELISA
Species Cross-Reactivity	Human;Rat;Mouse;
Recommended dilutions	Western Blot: 1/500 - 1/2000. Immunohistochemistry: 1/100 - 1/300. ELISA: 1/40000. Not yet tested in other applications.
Immunogen	The antiserum was produced against synthesized peptide derived from human PIK3CG. AA range:881-930
Specificity	PI 3-Kinase p110 γ Polyclonal Antibody detects endogenous levels of PI 3-Kinase p110 γ protein.
Formulation	Liquid in PBS containing 50% glycerol, 0.5% BSA and 0.02% sodium azide..
Storage	Store at -20°C. Avoid repeated freeze-thaw cycles.
Protein Name	Phosphatidylinositol 4,5-bisphosphate 3-kinase catalytic subunit gamma isoform
Gene Name	PIK3CG
Cellular localization	Cytoplasm . Cell membrane .
Purification	The antibody was affinity-purified from rabbit antiserum by affinity-chromatography using epitope-specific immunogen.
Clonality	Polyclonal

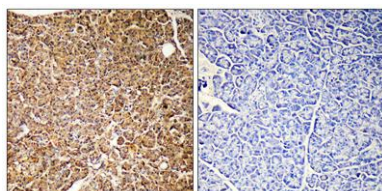
Concentration	1 mg/ml
Observed band	120kD
Human Gene ID	5294
Human Swiss-Prot Number	P48736
Alternative Names	PIK3CG; Phosphatidylinositol 4; 5-bisphosphate 3-kinase catalytic subunit gamma isoform; PI3-kinase subunit gamma; PI3K-gamma; PI3Kgamma; PtdIns-3-kinase subunit gamma; Phosphatidylinositol 4,5-bisphosphate 3-kinase 110 kDa catalytic subunit

Background

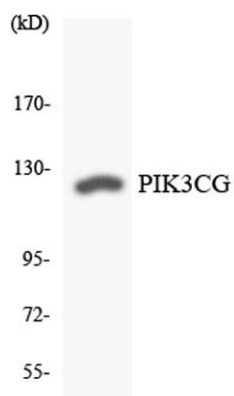
Phosphoinositide 3-kinases (PI3Ks) phosphorylate inositol lipids and are involved in the immune response. The protein encoded by this gene is a class I catalytic subunit of PI3K. Like other class I catalytic subunits (p110-alpha, p110-beta, and p110-delta), the encoded protein binds a p85 regulatory subunit to form PI3K. This gene is located in a commonly deleted segment of chromosome 7 previously identified in myeloid leukemias. Several transcript variants encoding the same protein have been found for this gene. [provided by RefSeq, Jun 2015],



Western blot analysis of PIK3CG Antibody. The lane on the right is blocked with the PIK3CG peptide.



Immunohistochemistry analysis of paraffin-embedded human pancreas, using PIK3CG Antibody. The lane on the right is blocked with the PIK3CG peptide.



Western blot analysis of the lysates from Jurkat cells using PIK3CG antibody.