

PEDF rabbit pAb**Cat#: orb769440 (Manual)**

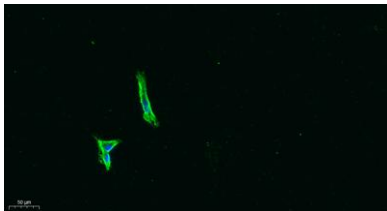
For research use only. Not intended for diagnostic use.

Product Name	PEDF rabbit pAb
Host species	Rabbit
Applications	IHC;IF;WB;ELISA
Species Cross-Reactivity	Human;Mouse;Rat
Recommended dilutions	Western Blot: 1/500 - 1/2000. IHC-p: 1:100-300 ELISA: 1/20000. IF 1:100-300 Not yet tested in other applications.
Immunogen	The antiserum was produced against synthesized peptide derived from human PEDF. AA range:258-307
Specificity	PEDF Polyclonal Antibody detects endogenous levels of PEDF protein.
Formulation	Liquid in PBS containing 50% glycerol, 0.5% BSA and 0.02% sodium azide..
Storage	Store at -20°C. Avoid repeated freeze-thaw cycles.
Protein Name	Pigment epithelium-derived factor
Gene Name	SERPINF1
Cellular localization	Secreted . Melanosome . Enriched in stage I melanosomes.
Purification	The antibody was affinity-purified from rabbit antiserum by affinity-chromatography using epitope-specific immunogen.
Clonality	Polyclonal

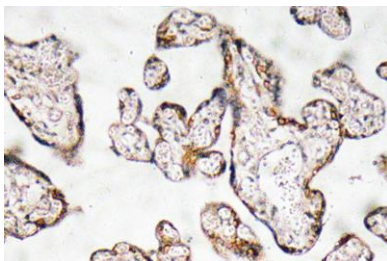
Concentration	1 mg/ml
Observed band	46kD
Human Gene ID	5176
Human Swiss-Prot Number	P36955
Alternative Names	SERPINF1; PEDF; PIG35; Pigment epithelium-derived factor; PEDF; Cell proliferation-inducing gene 35 protein; EPC-1; Serpin F1

Background

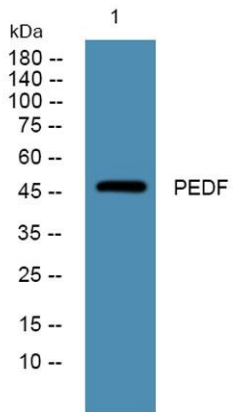
This gene encodes a member of the serpin family that does not display the serine protease inhibitory activity shown by many of the other serpin proteins. The encoded protein is secreted and strongly inhibits angiogenesis. In addition, this protein is a neurotrophic factor involved in neuronal differentiation in retinoblastoma cells. Mutations in this gene were found in individuals with osteogenesis imperfecta, type VI. [provided by RefSeq, Aug 2016],



Immunofluorescence analysis of A549. 1,primary Antibody was diluted at 1:200(4°C overnight). 2, Goat Anti Rabbit IgG (H&L) - Alexa Fluor 488 Secondary antibody was diluted at 1:1000(room temperature, 50min).3, Picture B: DAPI(blue) 10min.



Immunohistochemistry analysis of PEDF antibody in paraffin-embedded human prostate carcinoma tissue.



Western blot analysis of lysates from A431 cells, primary antibody was diluted at 1:1000, 4° over night