

CYB5R1 rabbit pAb**Cat#: orb769435 (Manual)**

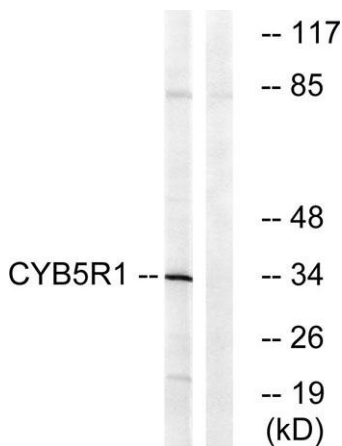
For research use only. Not intended for diagnostic use.

Product Name	CYB5R1 rabbit pAb
Host species	Rabbit
Applications	WB;ELISA
Species Cross-Reactivity	Human;Mouse;Rat
Recommended dilutions	Western Blot: 1/500 - 1/2000. ELISA: 1/20000. Not yet tested in other applications.
Immunogen	The antiserum was produced against synthesized peptide derived from human CYB5R1. AA range:9-58
Specificity	CYB5R1 Polyclonal Antibody detects endogenous levels of CYB5R1 protein.
Formulation	Liquid in PBS containing 50% glycerol, 0.5% BSA and 0.02% sodium azide..
Storage	Store at -20°C. Avoid repeated freeze-thaw cycles.
Protein Name	NADH-cytochrome b5 reductase 1
Gene Name	CYB5R1
Cellular localization	Membrane ; Single-pass membrane protein .
Purification	The antibody was affinity-purified from rabbit antiserum by affinity-chromatography using epitope-specific immunogen.
Clonality	Polyclonal

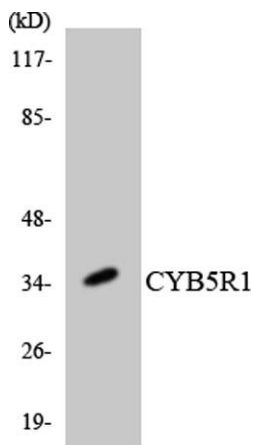
Concentration	1 mg/ml
Observed band	34kD
Human Gene ID	51706
Human Swiss-Prot Number	Q9UHQ9
Alternative Names	CYB5R1; NQO3A2; NADH-cytochrome b5 reductase 1; b5R.1; Humb5R2; NAD(P)H:quinone oxidoreductase type 3 polypeptide A2

Background

catalytic activity:NADH + 2 ferricytochrome b5 = NAD(+) + H(+) + 2 ferrocyanochrome b5.,cofactor:FAD.,function:NADH-cytochrome b5 reductases are involved in desaturation and elongation of fatty acids, cholesterol biosynthesis, drug metabolism, and, in erythrocyte, methemoglobin reduction.,similarity:Belongs to the flavoprotein pyridine nucleotide cytochrome reductase family.,similarity:Contains 1 FAD-binding FR-type domain.,tissue specificity:Widely expressed.,



Western blot analysis of lysates from RAW264.7 cells, using CYB5R1 Antibody. The lane on the right is blocked with the synthesized peptide.



Western blot analysis of the lysates from K562 cells using CYB5R1 antibody.



Explore. Bioreagents.

www.biorbyt.com