

CDK5 Activator-binding C42 rabbit pAb**Cat#: orb769428 (Manual)**

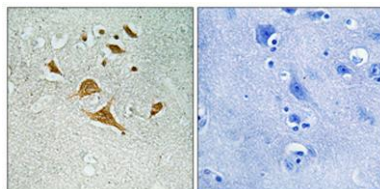
For research use only. Not intended for diagnostic use.

| | |
|---------------------------------|---|
| Product Name | CDK5 Activator-binding C42 rabbit pAb |
| Host species | Rabbit |
| Applications | IHC;IF;ELISA |
| Species Cross-Reactivity | Human;Rat;Mouse; |
| Recommended dilutions | Immunohistochemistry: 1/100 - 1/300. ELISA: 1/20000. Not yet tested in other applications. |
| Immunogen | The antiserum was produced against synthesized peptide derived from human CDK5RAP1. AA range:251-300 |
| Specificity | CDK5 Activator-binding C42 Polyclonal Antibody detects endogenous levels of CDK5 Activator-binding C42 protein. |
| Formulation | Liquid in PBS containing 50% glycerol, 0.5% BSA and 0.02% sodium azide.. |
| Storage | Store at -20°C. Avoid repeated freeze-thaw cycles. |
| Protein Name | CDK5 regulatory subunit-associated protein 1 |
| Gene Name | CDK5RAP1 |
| Cellular localization | Mitochondrion . |
| Purification | The antibody was affinity-purified from rabbit antiserum by affinity-chromatography using epitope-specific immunogen. |
| Clonality | Polyclonal |

| | |
|--------------------------------|---|
| Concentration | 1 mg/ml |
| Observed band | |
| Human Gene ID | 51654 |
| Human Swiss-Prot Number | Q96SZ6 |
| Alternative Names | CDK5RAP1; C20orf34; CGI-05; HSPC167; CDK5 regulatory subunit-associated protein 1; CDK5 activator-binding protein C42 |

Background

This gene encodes a regulator of cyclin-dependent kinase 5 activity. This protein has also been reported to modify RNA by adding a methylthio-group and may thus have a dual function as an RNA methylthiotransferase and as an inhibitor of cyclin-dependent kinase 5 activity. Alternative splicing results in multiple transcript variants that encode different isoforms. [provided by RefSeq, May 2013],



Immunohistochemical analysis of paraffin-embedded Human brain. Antibody was diluted at 1:100(4° overnight). High-pressure and temperature Tris-EDTA,pH8.0 was used for antigen retrieval. Negative contrl (right) obtained from antibody was pre-absorbed by i