

## HMP19 rabbit pAb

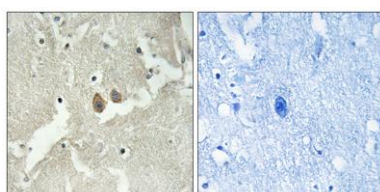
**Cat#: orb769424 (Manual)**

For research use only. Not intended for diagnostic use.

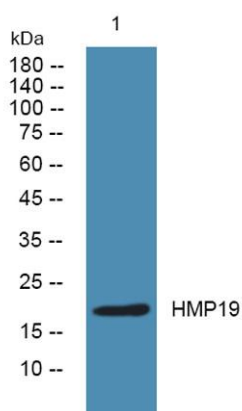
<b>Product Name</b>	HMP19 rabbit pAb
<b>Host species</b>	Rabbit
<b>Applications</b>	IHC;IF;WB;ELISA
<b>Species Cross-Reactivity</b>	Human;Mouse
<b>Recommended dilutions</b>	WB 1:500-2000 Immunohistochemistry: 1/100 - 1/300. ELISA: 1/20000. Not yet tested in other applications.
<b>Immunogen</b>	The antiserum was produced against synthesized peptide derived from human NSG2. AA range:33-82
<b>Specificity</b>	HMP19 Polyclonal Antibody detects endogenous levels of HMP19 protein.
<b>Formulation</b>	Liquid in PBS containing 50% glycerol, 0.5% BSA and 0.02% sodium azide..
<b>Storage</b>	Store at -20°C. Avoid repeated freeze-thaw cycles.
<b>Protein Name</b>	Neuron-specific protein family member 2
<b>Gene Name</b>	NSG2
<b>Cellular localization</b>	Membrane ; Single-pass type II membrane protein . Golgi apparatus, trans-Golgi network membrane . Cell projection, dendrite . Endosome membrane . Early endosome membrane . Late endosome membrane . Lysosome lumen . Cytoplasmic vesicle membrane . Golgi appa
<b>Purification</b>	The antibody was affinity-purified from rabbit antiserum by affinity-chromatography using epitope-specific immunogen.

<b>Clonality</b>	Polyclonal
<b>Concentration</b>	1 mg/ml
<b>Observed band</b>	19kD
<b>Human Gene ID</b>	51617
<b>Human Swiss-Prot Number</b>	Q9Y328
<b>Alternative Names</b>	NSG2; Neuron-specific protein family member 2; Protein p19; Hmp19

**Background** similarity:Belongs to the NSG family.,subcellular location:Mainly Golgi stack, but also found in small vacuolar organelles and multivesicular bodies.,



Immunohistochemistry analysis of paraffin-embedded human brain tissue, using NSG2 Antibody. The picture on the right is blocked with the synthesized peptide.



Western blot analysis of lysates from DU145 cells, primary antibody was diluted at 1:1000, 4° over night