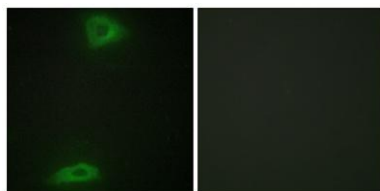


ERGIC-3 rabbit pAb**Cat#: orb769423 (Manual)**

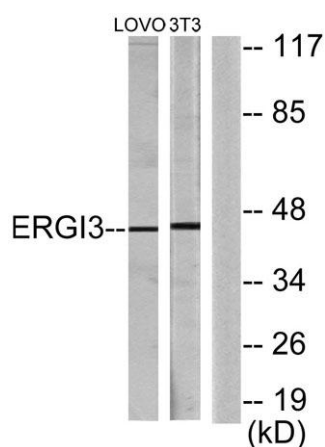
For research use only. Not intended for diagnostic use.

Product Name	ERGIC-3 rabbit pAb
Host species	Rabbit
Applications	WB;IHC;IF;ELISA
Species Cross-Reactivity	Human;Mouse
Recommended dilutions	Western Blot: 1/500 - 1/2000. Immunohistochemistry: 1/100 - 1/300. Immunofluorescence: 1/200 - 1/1000. ELISA: 1/20000. Not yet tested in other applications.
Immunogen	The antiserum was produced against synthesized peptide derived from human ERGIC3. AA range:321-370
Specificity	ERGIC-3 Polyclonal Antibody detects endogenous levels of ERGIC-3 protein.
Formulation	Liquid in PBS containing 50% glycerol, 0.5% BSA and 0.02% sodium azide..
Storage	Store at -20°C. Avoid repeated freeze-thaw cycles.
Protein Name	Endoplasmic reticulum-Golgi intermediate compartment protein 3
Gene Name	ERGIC3
Cellular localization	Endoplasmic reticulum-Golgi intermediate compartment membrane ; Multi-pass membrane protein . Golgi apparatus, cis-Golgi network membrane ; Multi-pass membrane protein . Endoplasmic reticulum membrane ; Multi-pass membrane protein . Cycles between the endoplasmic reticulum and the Golgi.
Purification	The antibody was affinity-purified from rabbit antiserum by affinity-chromatography using epitope-specific immunogen.

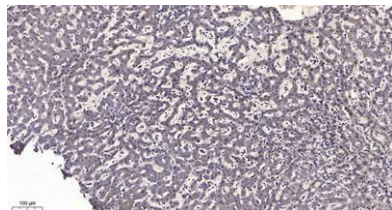
Clonality	Polyclonal
Concentration	1 mg/ml
Observed band	43kD
Human Gene ID	51614
Human Swiss-Prot Number	Q9Y282
Alternative Names	ERGIC3; C20orf47; ERV46; SDBCAG84; CGI-54; Endoplasmic reticulum-Golgi intermediate compartment protein 3; Serologically defined breast cancer antigen NY-BR-84
Background	function:Possible role in transport between endoplasmic reticulum and Golgi.,similarity:Belongs to the ERGIC family.,subcellular location:Cycles between the endoplasmic reticulum and the Golgi.,subunit:Interacts with ERGIC1/ERGIC32.,



Immunofluorescence analysis of HepG2 cells, using ERG13 Antibody. The picture on the right is blocked with the synthesized peptide.



Western blot analysis of lysates from LOVO and NIH/3T3 cells, using ERG13 Antibody. The lane on the right is blocked with the synthesized peptide.



Immunohistochemical analysis of paraffin-embedded human liver cancer. 1, Antibody was diluted at 1:200(4° overnight). 2, Tris-EDTA,pH9.0 was used for antigen retrieval. 3,Secondary antibody was diluted at 1:200(room temperature, 45min).