

ARMCX3 rabbit pAb**Cat#: orb769414 (Manual)**

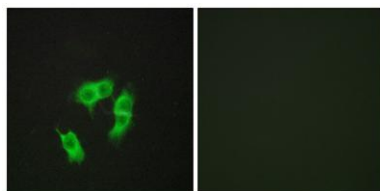
For research use only. Not intended for diagnostic use.

Product Name	ARMCX3 rabbit pAb
Host species	Rabbit
Applications	WB;IHC;IF;ELISA
Species Cross-Reactivity	Human;Mouse;Rat
Recommended dilutions	Western Blot: 1/500 - 1/2000. Immunohistochemistry: 1/100 - 1/300. Immunofluorescence: 1/200 - 1/1000. ELISA: 1/5000. Not yet tested in other applications.
Immunogen	The antiserum was produced against synthesized peptide derived from human ARMX3. AA range:291-340
Specificity	ARMCX3 Polyclonal Antibody detects endogenous levels of ARMX3 protein.
Formulation	Liquid in PBS containing 50% glycerol, 0.5% BSA and 0.02% sodium azide..
Storage	Store at -20°C. Avoid repeated freeze-thaw cycles.
Protein Name	Armadillo repeat-containing X-linked protein 3
Gene Name	ARMCX3
Cellular localization	Mitochondrion outer membrane ; Single-pass membrane protein . Cytoplasm . Nucleus .
Purification	The antibody was affinity-purified from rabbit antiserum by affinity-chromatography using epitope-specific immunogen.
Clonality	Polyclonal

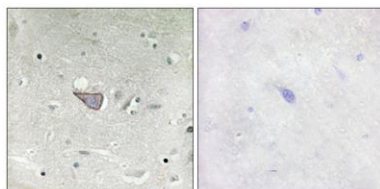
Concentration	1 mg/ml
Observed band	38kD
Human Gene ID	51566
Human Swiss-Prot Number	Q9UH62
Alternative Names	ARMCX3; ALEX3; BM-017; Armadillo repeat-containing X-linked protein 3; ARM protein lost in epithelial cancers on chromosome X 3; Protein ALEX3

Background

armadillo repeat containing, X-linked 3 (ARMCX3) Homo sapiens This gene encodes a member of the ALEX family of proteins which may play a role in tumor suppression. The encoded protein contains a potential N-terminal transmembrane domain and a single Armadillo (arm) repeat. Other proteins containing the arm repeat are involved in development, maintenance of tissue integrity, and tumorigenesis. This gene is closely localized with other family members on the X chromosome. Three transcript variants encoding the same protein have been identified for this gene. [provided by RefSeq, Jul 2008],



Immunofluorescence analysis of HepG2 cells, using ARMX3 Antibody. The picture on the right is blocked with the synthesized peptide.



Immunohistochemistry analysis of paraffin-embedded human brain tissue, using ARMX3 Antibody. The picture on the right is blocked with the synthesized peptide.

