

RNF138 rabbit pAb**Cat#: orb769400 (Manual)**

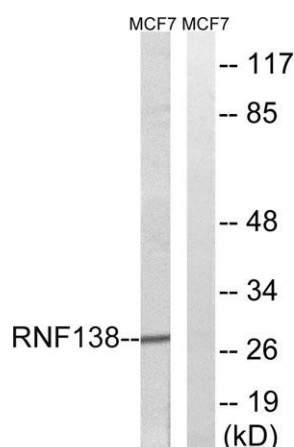
For research use only. Not intended for diagnostic use.

Product Name	RNF138 rabbit pAb
Host species	Rabbit
Applications	WB;IHC
Species Cross-Reactivity	Human;Mouse;Rat
Recommended dilutions	WB 1:500-2000;IHC-p 1:50-300
Immunogen	The antiserum was produced against synthesized peptide derived from human RNF138. AA range:31-80
Specificity	RNF138 Polyclonal Antibody detects endogenous levels of RNF138 protein.
Formulation	Liquid in PBS containing 50% glycerol, 0.5% BSA and 0.02% sodium azide..
Storage	Store at -20°C. Avoid repeated freeze-thaw cycles.
Protein Name	E3 ubiquitin-protein ligase RNF138
Gene Name	RNF138
Cellular localization	Chromosome . Recruited at DNA damage sites (PubMed:26502055). Localizes to sites of double-strand break: localization to double-strand break sites is mediated by the zinc fingers (PubMed:26502055, PubMed:26502057). .
Purification	The antibody was affinity-purified from rabbit antiserum by affinity-chromatography using epitope-specific immunogen.

Clonality	Polyclonal
Concentration	1 mg/ml
Observed band	28kD
Human Gene ID	51444
Human Swiss-Prot Number	Q8WVD3
Alternative Names	RNF138; NARF; HSD-4; HSD4; E3 ubiquitin-protein ligase RNF138; Nemo-like kinase-associated RING finger protein; NLK-associated RING finger protein; hNARF; RING finger protein 138

Background

ring finger protein 138(RNF138) Homo sapiens The protein encoded by this gene contains a RING finger, a motif present in a variety of functionally distinct proteins and known to be involved in protein-DNA and protein-protein interactions. Alternatively spliced transcript variants encoding distinct isoforms have been observed. [provided by RefSeq, Jul 2008],



Western blot analysis of lysates from MCF-7 cells, using RNF138 Antibody. The lane on the right is blocked with the synthesized peptide.



Immunohistochemical analysis of paraffin-embedded human oophoroma. 1, Antibody was diluted at 1:200(4° overnight). 2, Tris-EDTA,pH9.0 was used for antigen retrieval. 3,Secondary antibody was diluted at 1:200(room temperature, 45min).



Explore. Bioreagents.

www.biorbyt.com