

**PLA1A rabbit pAb****Cat#: orb769395 (Manual)**

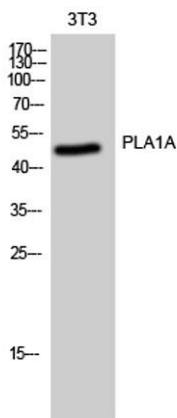
For research use only. Not intended for diagnostic use.

<b>Product Name</b>	PLA1A rabbit pAb
<b>Host species</b>	Rabbit
<b>Applications</b>	WB;IHC;IF;ELISA
<b>Species Cross-Reactivity</b>	Human;Rat;Mouse;
<b>Recommended dilutions</b>	Western Blot: 1/500 - 1/2000. Immunohistochemistry: 1/100 - 1/300. ELISA: 1/5000. Not yet tested in other applications.
<b>Immunogen</b>	The antiserum was produced against synthesized peptide derived from human PLA1A. AA range:381-430
<b>Specificity</b>	PLA1A Polyclonal Antibody detects endogenous levels of PLA1A protein.
<b>Formulation</b>	Liquid in PBS containing 50% glycerol, 0.5% BSA and 0.02% sodium azide..
<b>Storage</b>	Store at -20°C. Avoid repeated freeze-thaw cycles.
<b>Protein Name</b>	Phospholipase A1 member A
<b>Gene Name</b>	PLA1A
<b>Cellular localization</b>	Secreted .
<b>Purification</b>	The antibody was affinity-purified from rabbit antiserum by affinity-chromatography using epitope-specific immunogen.
<b>Clonality</b>	Polyclonal

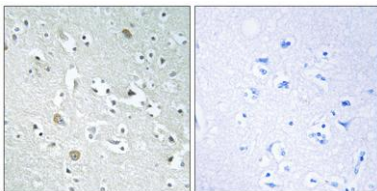
<b>Concentration</b>	1 mg/ml
<b>Observed band</b>	45-50kD
<b>Human Gene ID</b>	51365
<b>Human Swiss-Prot Number</b>	Q53H76
<b>Alternative Names</b>	PLA1A; NMD; PSPLA1; Phospholipase A1 member A; Phosphatidylserine-specific phospholipase A1; PS-PLA1

**Background**

The protein encoded by this gene is a phospholipase that hydrolyzes fatty acids at the sn-1 position of phosphatidylserine and 1-acyl-2-lysophosphatidylserine. This secreted protein hydrolyzes phosphatidylserine in liposomes. Three transcript variants encoding different isoforms have been found for this gene.[provided by RefSeq, May 2011],



**Western Blot analysis of 3T3 cells using PLA1A Polyclonal Antibody**



**Immunohistochemistry analysis of paraffin-embedded human brain, using PLA1A Antibody. The picture on the right is blocked with the synthesized peptide.**