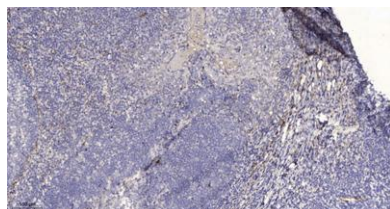


PLUNC rabbit pAb**Cat#: orb769389 (Manual)**

For research use only. Not intended for diagnostic use.

Product Name	PLUNC rabbit pAb
Host species	Rabbit
Applications	IHC;IF;ELISA
Species Cross-Reactivity	Human;Rat;Mouse;
Recommended dilutions	WB 1:500-2000 ,Immunohistochemistry: 1/100 - 1/300. ELISA: 1/40000. Not yet tested in other applications.
Immunogen	Synthesized peptide derived from the Internal region of human PLUNC.
Specificity	PLUNC Polyclonal Antibody detects endogenous levels of PLUNC protein.
Formulation	Liquid in PBS containing 50% glycerol, 0.5% BSA and 0.02% sodium azide..
Storage	Store at -20°C. Avoid repeated freeze-thaw cycles.
Protein Name	BPI fold-containing family A member 1
Gene Name	BPIFA1
Cellular localization	Secreted . Apical side of airway epithelial cells. Detected in airway surface liquid, nasal mucus and sputum.
Purification	The antibody was affinity-purified from rabbit antiserum by affinity-chromatography using epitope-specific immunogen.
Clonality	Polyclonal

Concentration	1 mg/ml
Observed band	
Human Gene ID	51297
Human Swiss-Prot Number	Q9NP55
Alternative Names	BPIFA1; LUNX; NASG; PLUNC; SPURT; BPI fold-containing family A member 1; Lung-specific protein X; Nasopharyngeal carcinoma-related protein; Palate lung and nasal epithelium clone protein; Secretory protein in upper respiratory tracts; Trach
Background	This gene is the human homolog of murine plunc, and like the mouse gene, is specifically expressed in the upper airways and nasopharyngeal regions. The encoded antimicrobial protein displays antibacterial activity against Gram-negative bacteria. It is thought to be involved in inflammatory responses to irritants in the upper airways and may also serve as a potential molecular marker for detection of micrometastasis in non-small-cell lung cancer. Multiple transcript variants resulting from alternative splicing in the 3' UTR have been detected, but the full-length nature of only three are known. [provided by RefSeq, Aug 2014],



Immunohistochemical analysis of paraffin-embedded human tonsil. 1, Antibody was diluted at 1:200(4° overnight). 2, Tris-EDTA,pH9.0 was used for antigen retrieval. 3,Secondary antibody was diluted at 1:200(room temperature, 30min).