

DHHC-9 rabbit pAb**Cat#: orb769372 (Manual)**

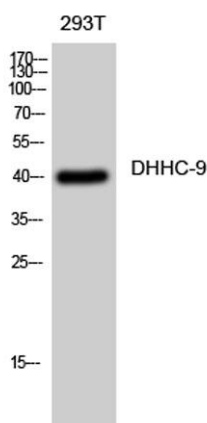
For research use only. Not intended for diagnostic use.

Product Name	DHHC-9 rabbit pAb
Host species	Rabbit
Applications	WB;IHC;IF;ELISA
Species Cross-Reactivity	Human;Mouse;Rat
Recommended dilutions	Western Blot: 1/500 - 1/2000. Immunohistochemistry: 1/100 - 1/300. ELISA: 1/40000. Not yet tested in other applications.
Immunogen	The antiserum was produced against synthesized peptide derived from human ZDHHC9. AA range:315-364
Specificity	DHHC-9 Polyclonal Antibody detects endogenous levels of DHHC-9 protein.
Formulation	Liquid in PBS containing 50% glycerol, 0.5% BSA and 0.02% sodium azide..
Storage	Store at -20°C. Avoid repeated freeze-thaw cycles.
Protein Name	Palmitoyltransferase ZDHHC9
Gene Name	ZDHHC9
Cellular localization	Endoplasmic reticulum membrane ; Multi-pass membrane protein . Golgi apparatus membrane ; Multi-pass membrane protein .
Purification	The antibody was affinity-purified from rabbit antiserum by affinity-chromatography using epitope-specific immunogen.
Clonality	Polyclonal

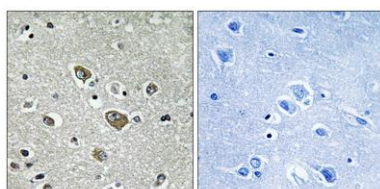
Concentration	1 mg/ml
Observed band	41kD
Human Gene ID	51114
Human Swiss-Prot Number	Q9Y397
Alternative Names	ZDHHC9; CXorf11; ZDHHC10; ZNF379; ZNF380; CGI-89; Palmitoyltransferase ZDHHC9; Zinc finger DHHC domain-containing protein 9; DHHC-9; DHHC9; Zinc finger protein 379; Zinc finger protein 380

Background

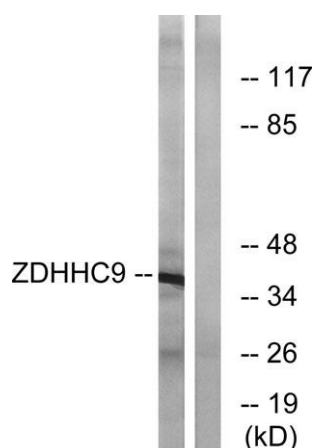
This gene encodes an integral membrane protein that is a member of the zinc finger DHHC domain-containing protein family. The encoded protein forms a complex with golgin subfamily A member 7 and functions as a palmitoyltransferase. This protein specifically palmitoylates HRAS and NRAS. Mutations in this gene are associated with X-linked mental retardation. Alternate splicing results in multiple transcript variants that encode the same protein.[provided by RefSeq, May 2010],



Western Blot analysis of 293T cells using DHHC-9 Polyclonal Antibody diluted at 1:1000



Immunohistochemistry analysis of paraffin-embedded human brain tissue, using ZDHHC9 Antibody. The picture on the right is blocked with the synthesized peptide.



Western blot analysis of lysates from COLO cells, using ZDHHC9 Antibody. The lane on the right is blocked with the synthesized peptide.