

ZNF691 rabbit pAb**Cat#: orb769369 (Manual)**

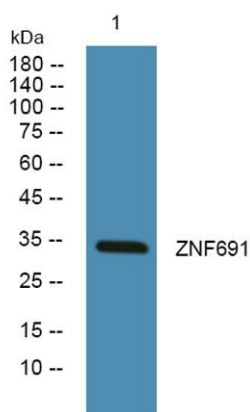
For research use only. Not intended for diagnostic use.

Product Name	ZNF691 rabbit pAb
Host species	Rabbit
Applications	WB;ELISA
Species Cross-Reactivity	Human;Rat;Mouse;
Recommended dilutions	Western Blot: 1/500 - 1/2000. ELISA: 1/40000. Not yet tested in other applications.
Immunogen	Synthesized peptide derived from the Internal region of human ZNF691.
Specificity	ZNF691 Polyclonal Antibody detects endogenous levels of ZNF691 protein.
Formulation	Liquid in PBS containing 50% glycerol, 0.5% BSA and 0.02% sodium azide..
Storage	Store at -20°C. Avoid repeated freeze-thaw cycles.
Protein Name	Zinc finger protein 691
Gene Name	ZNF691
Cellular localization	Nucleus .
Purification	The antibody was affinity-purified from rabbit antiserum by affinity-chromatography using epitope-specific immunogen.
Clonality	Polyclonal

Concentration	1 mg/ml
Observed band	33kD
Human Gene ID	51058
Human Swiss-Prot Number	Q5VV52
Alternative Names	ZNF691; Zinc finger protein 691

Background

function:May be involved in transcriptional regulation.,similarity:Belongs to the krueppel C2H2-type zinc-finger protein family.,similarity:Contains 7 C2H2-type zinc fingers.,



Western blot analysis of lysates from A431 cells, primary antibody was diluted at 1:1000, 4° over night