

T2R1 rabbit pAb

Cat#: orb769358 (Manual)

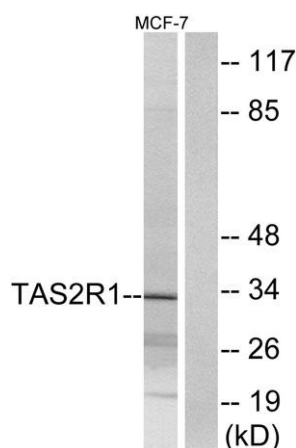
For research use only. Not intended for diagnostic use.

Product Name	T2R1 rabbit pAb
Host species	Rabbit
Applications	WB;ELISA;IHC
Species Cross-Reactivity	Human;Rat;Mouse;
Recommended dilutions	WB 1:500-2000;IHC-p 1:50-300; ELISA 2000-20000
Immunogen	The antiserum was produced against synthesized peptide derived from human TAS2R1. AA range:6-55
Specificity	T2R1 Polyclonal Antibody detects endogenous levels of T2R1 protein.
Formulation	Liquid in PBS containing 50% glycerol, 0.5% BSA and 0.02% sodium azide..
Storage	Store at -20°C. Avoid repeated freeze-thaw cycles.
Protein Name	Taste receptor type 2 member 1
Gene Name	TAS2R1
Cellular localization	Membrane; Multi-pass membrane protein.
Purification	The antibody was affinity-purified from rabbit antiserum by affinity-chromatography using epitope-specific immunogen.
Clonality	Polyclonal

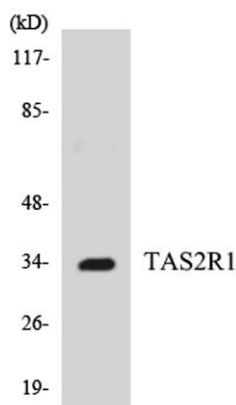
Concentration	1 mg/ml
Observed band	33kD
Human Gene ID	50834
Human Swiss-Prot Number	Q9NYW7
Alternative Names	TAS2R1; Taste receptor type 2 member 1; T2R1; Taste receptor family B member 7; TRB7

Background

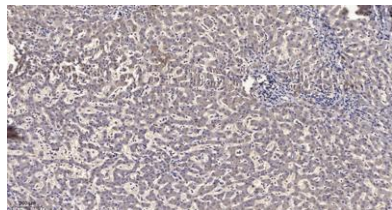
This gene encodes a member of a family of candidate taste receptors that are members of the G protein-coupled receptor superfamily and that are specifically expressed by taste receptor cells of the tongue and palate epithelia. This intronless taste receptor gene encodes a 7-transmembrane receptor protein, functioning as a bitter taste receptor. This gene is mapped to chromosome 5p15, the location of a genetic locus (PROP) that controls the detection of the bitter compound 6-n-propyl-2-thiouracil. [provided by RefSeq, Jul 2008],



Western blot analysis of lysates from MCF-7 cells, using TAS2R1 Antibody. The lane on the right is blocked with the synthesized peptide.



Western blot analysis of the lysates from K562 cells using TAS2R1 antibody.



Immunohistochemical analysis of paraffin-embedded human liver cancer. 1, Antibody was diluted at 1:200(4° overnight). 2, Tris-EDTA,pH9.0 was used for antigen retrieval. 3,Secondary antibody was diluted at 1:200(room temperature, 45min).