

Ubiquilin-3 rabbit pAb

Cat#: orb769341 (Manual)

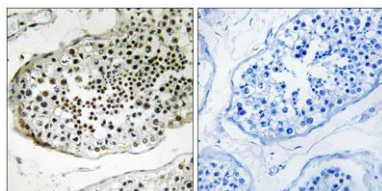
For research use only. Not intended for diagnostic use.

Product Name	Ubiquilin-3 rabbit pAb
Host species	Rabbit
Applications	WB;IHC;IF;ELISA
Species Cross-Reactivity	Human;Mouse;Rat
Recommended dilutions	Western Blot: 1/500 - 1/2000. Immunohistochemistry: 1/100 - 1/300. ELISA: 1/40000. Not yet tested in other applications.
Immunogen	The antiserum was produced against synthesized peptide derived from human UBQLN3. AA range:271-320
Specificity	Ubiquilin-3 Polyclonal Antibody detects endogenous levels of Ubiquilin-3 protein.
Formulation	Liquid in PBS containing 50% glycerol, 0.5% BSA and 0.02% sodium azide..
Storage	Store at -20°C. Avoid repeated freeze-thaw cycles.
Protein Name	Ubiquilin-3
Gene Name	UBQLN3
Cellular localization	
Purification	The antibody was affinity-purified from rabbit antiserum by affinity-chromatography using epitope-specific immunogen.
Clonality	Polyclonal

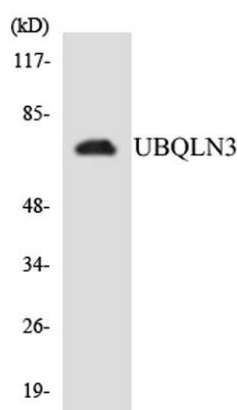
Concentration	1 mg/ml
Observed band	70kD
Human Gene ID	50613
Human Swiss-Prot Number	Q9H347
Alternative Names	UBQLN3; Ubiquilin-3

Background

Summary: This gene encodes an ubiquitin-like protein (ubiquilin) that shares high degree of similarity with related products in yeast, rat and frog. Ubiquilins contain a N-terminal ubiquitin-like domain and a C-terminal ubiquitin-associated domain. They physically associate with both proteasomes and ubiquitin ligases, and thus thought to functionally link the ubiquitination machinery to the proteasome to affect in vivo protein degradation. This gene is specifically expressed in the testis, and proposed to regulate cell-cycle progression during spermatogenesis. [provided by RefSeq, Jul 2008],



Immunohistochemistry analysis of paraffin-embedded human testis tissue, using UBQLN3 Antibody. The picture on the right is blocked with the synthesized peptide.



Western blot analysis of the lysates from Jurkat cells using UBQLN3 antibody.



Explore. Bioreagents.

www.biorbyt.com