

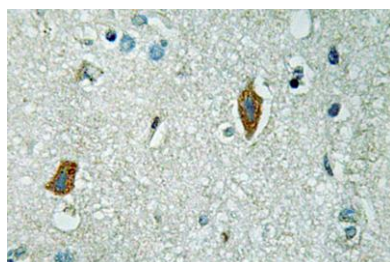
PAI-2 rabbit pAb

Cat#: orb769330 (Manual)

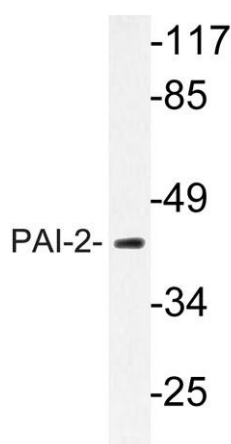
For research use only. Not intended for diagnostic use.

Product Name	PAI-2 rabbit pAb
Host species	Rabbit
Applications	WB;IHC;IF;ELISA
Species Cross-Reactivity	Human;Rat;Mouse;
Recommended dilutions	Western Blot: 1/500 - 1/2000. Immunohistochemistry: 1/100 - 1/300. ELISA: 1/40000. Not yet tested in other applications.
Immunogen	The antiserum was produced against synthesized peptide derived from human PAI-2. AA range:258-307
Specificity	PAI-2 Polyclonal Antibody detects endogenous levels of PAI-2 protein.
Formulation	Liquid in PBS containing 50% glycerol, 0.5% BSA and 0.02% sodium azide..
Storage	Store at -20°C. Avoid repeated freeze-thaw cycles.
Protein Name	Plasminogen activator inhibitor 2
Gene Name	SERPINB2
Cellular localization	Cytoplasm. Secreted, extracellular space.
Purification	The antibody was affinity-purified from rabbit antiserum by affinity-chromatography using epitope-specific immunogen.
Clonality	Polyclonal

Concentration	1 mg/ml
Observed band	46kD
Human Gene ID	5055
Human Swiss-Prot Number	P05120
Alternative Names	SERPINB2; PAI2; PLANH2; Plasminogen activator inhibitor 2; PAI-2; Monocyte Arg-serpin; Placental plasminogen activator inhibitor; Serpin B2; Urokinase inhibitor
Background	function:Inhibits urokinase-type plasminogen activator. The monocyte derived PAI-2 is distinct from the endothelial cell-derived PAI-1.,PTM:The signal sequence is not cleaved.,similarity:Belongs to the serpin family. Ov-serpin subfamily.,



Immunohistochemistry analysis of PAI-2 antibody in paraffin-embedded human brain tissue.



Western blot analysis of lysate from MCF-7 cells, using PAI-2 antibody.