

**PABP3 rabbit pAb****Cat#: orb769329 (Manual)**

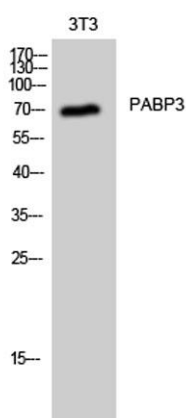
For research use only. Not intended for diagnostic use.

<b>Product Name</b>	PABP3 rabbit pAb
<b>Host species</b>	Rabbit
<b>Applications</b>	WB;IHC;IF;ELISA
<b>Species Cross-Reactivity</b>	Human;Rat;Mouse;
<b>Recommended dilutions</b>	Western Blot: 1/500 - 1/2000.IHC-p:1:50-300 ELISA: 1/20000. Not yet tested in other applications.
<b>Immunogen</b>	The antiserum was produced against synthesized peptide derived from human PABPC3. AA range:352-401
<b>Specificity</b>	PABP3 Polyclonal Antibody detects endogenous levels of PABP3 protein.
<b>Formulation</b>	Liquid in PBS containing 50% glycerol, 0.5% BSA and 0.02% sodium azide..
<b>Storage</b>	Store at -20°C. Avoid repeated freeze-thaw cycles.
<b>Protein Name</b>	Polyadenylate-binding protein 3
<b>Gene Name</b>	PABPC3
<b>Cellular localization</b>	Cytoplasm .
<b>Purification</b>	The antibody was affinity-purified from rabbit antiserum by affinity-chromatography using epitope-specific immunogen.
<b>Clonality</b>	Polyclonal

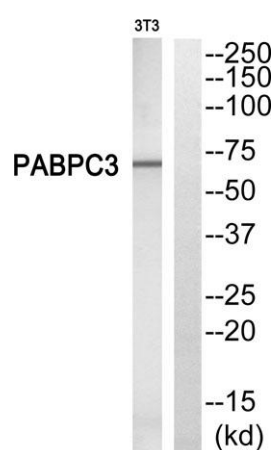
<b>Concentration</b>	1 mg/ml
<b>Observed band</b>	70kD
<b>Human Gene ID</b>	5042
<b>Human Swiss-Prot Number</b>	Q9H361
<b>Alternative Names</b>	PABPC3; PABP3; PABPL3; Polyadenylate-binding protein 3; PABP-3; Poly(A)-binding protein 3; Testis-specific poly(A)-binding protein

### Background

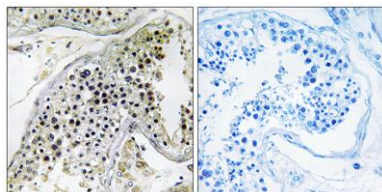
Messenger RNA stability and translation initiation are extensively under the control of poly(A)-binding proteins (PABP). See PABPC1 (MIM 604679) for background information.[supplied by OMIM, Jul 2002].



**Western Blot analysis of 3T3 cells using PABP3 Polyclonal Antibody**



**Western blot analysis of PABPC3 Antibody. The lane on the right is blocked with the PABPC3 peptide.**



**Immunohistochemistry analysis of paraffin-embedded human testis, using PABPC3 Antibody. The lane on the right is blocked with the PABPC3 peptide.**