

**Ovol1 rabbit pAb****Cat#: orb769326 (Manual)**

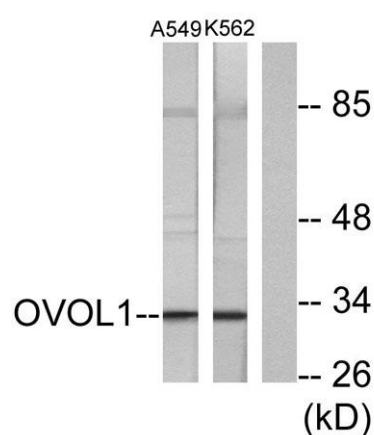
For research use only. Not intended for diagnostic use.

<b>Product Name</b>	Ovol1 rabbit pAb
<b>Host species</b>	Rabbit
<b>Applications</b>	WB;IHC;IF;ELISA
<b>Species Cross-Reactivity</b>	Human;Mouse
<b>Recommended dilutions</b>	Western Blot: 1/500 - 1/2000. Immunohistochemistry: 1/100 - 1/300. ELISA: 1/40000. Not yet tested in other applications.
<b>Immunogen</b>	The antiserum was produced against synthesized peptide derived from human OVOL1. AA range:1-50
<b>Specificity</b>	Ovol1 Polyclonal Antibody detects endogenous levels of Ovol1 protein.
<b>Formulation</b>	Liquid in PBS containing 50% glycerol, 0.5% BSA and 0.02% sodium azide..
<b>Storage</b>	Store at -20°C. Avoid repeated freeze-thaw cycles.
<b>Protein Name</b>	Putative transcription factor Ovo-like 1
<b>Gene Name</b>	OVOL1
<b>Cellular localization</b>	Nucleus .
<b>Purification</b>	The antibody was affinity-purified from rabbit antiserum by affinity-chromatography using epitope-specific immunogen.
<b>Clonality</b>	Polyclonal

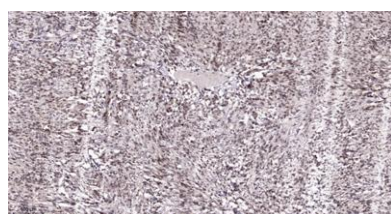
<b>Concentration</b>	1 mg/ml
<b>Observed band</b>	33kD
<b>Human Gene ID</b>	5017
<b>Human Swiss-Prot Number</b>	O14753
<b>Alternative Names</b>	OVOL1; Putative transcription factor Ovo-like 1; hOvo1

### Background

This gene encodes a putative zinc finger containing transcription factor that is highly similar to homologous protein in *Drosophila* and mouse. Based on known functions in these species, this protein is likely involved in hair formation and spermatogenesis in human as well. [provided by RefSeq, Aug 2011],



Western blot analysis of lysates from K562 and A549 cells, using OVOL1 Antibody. The lane on the right is blocked with the synthesized peptide.



Immunohistochemical analysis of paraffin-embedded human Colon cancer. 1, Antibody was diluted at 1:200(4° overnight). 2, Tris-EDTA,pH9.0 was used for antigen retrieval. 3,Secondary antibody was diluted at 1:200(room temperature, 45min).