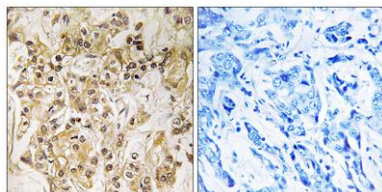


**ZNF295 rabbit pAb****Cat#: orb769319 (Manual)**

For research use only. Not intended for diagnostic use.

<b>Product Name</b>	ZNF295 rabbit pAb
<b>Host species</b>	Rabbit
<b>Applications</b>	IHC;IF;ELISA
<b>Species Cross-Reactivity</b>	Human;Mouse
<b>Recommended dilutions</b>	Immunohistochemistry: 1/100 - 1/300. ELISA: 1/10000. Not yet tested in other applications.
<b>Immunogen</b>	The antiserum was produced against synthesized peptide derived from human ZNF295. AA range:731-780
<b>Specificity</b>	ZNF295 Polyclonal Antibody detects endogenous levels of ZNF295 protein.
<b>Formulation</b>	Liquid in PBS containing 50% glycerol, 0.5% BSA and 0.02% sodium azide..
<b>Storage</b>	Store at -20°C. Avoid repeated freeze-thaw cycles.
<b>Protein Name</b>	Zinc finger protein 295
<b>Gene Name</b>	ZNF295
<b>Cellular localization</b>	Nucleus . Colocalizes with ZBTB14 in nucleus in HEK293 cells.
<b>Purification</b>	The antibody was affinity-purified from rabbit antiserum by affinity-chromatography using epitope-specific immunogen.
<b>Clonality</b>	Polyclonal

<b>Concentration</b>	1 mg/ml
<b>Observed band</b>	
<b>Human Gene ID</b>	49854
<b>Human Swiss-Prot Number</b>	Q9ULJ3
<b>Alternative Names</b>	ZNF295; KIAA1227; ZBTB21; Zinc finger protein 295; Zinc finger and BTB domain-containing protein 21
<b>Background</b>	function:May be involved in transcriptional regulation.,PTM:Phosphorylated upon DNA damage, probably by ATM or ATR.,similarity:Contains 1 BTB (POZ) domain.,similarity:Contains 8 C2H2-type zinc fingers.,



**Immunohistochemistry analysis of paraffin-embedded human breast carcinoma tissue, using ZNF295 Antibody. The picture on the right is blocked with the synthesized peptide.**