

**NRF-1 rabbit pAb****Cat#: orb769291 (Manual)**

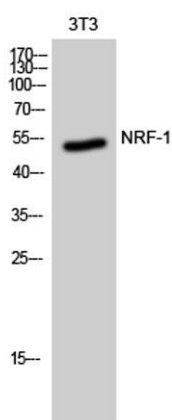
For research use only. Not intended for diagnostic use.

<b>Product Name</b>	NRF-1 rabbit pAb
<b>Host species</b>	Rabbit
<b>Applications</b>	WB;ELISA
<b>Species Cross-Reactivity</b>	Human;Mouse;Rat;Bovine
<b>Recommended dilutions</b>	Western Blot: 1/500 - 1/2000. ELISA: 1/5000. Not yet tested in other applications.
<b>Immunogen</b>	The antiserum was produced against synthesized peptide derived from human NRF1. AA range:221-270
<b>Specificity</b>	NRF-1 Polyclonal Antibody detects endogenous levels of NRF-1 protein.
<b>Formulation</b>	Liquid in PBS containing 50% glycerol, 0.5% BSA and 0.02% sodium azide..
<b>Storage</b>	Store at -20°C. Avoid repeated freeze-thaw cycles.
<b>Protein Name</b>	Nuclear respiratory factor 1
<b>Gene Name</b>	NRF1
<b>Cellular localization</b>	Nucleus.
<b>Purification</b>	The antibody was affinity-purified from rabbit antiserum by affinity-chromatography using epitope-specific immunogen.
<b>Clonality</b>	Polyclonal

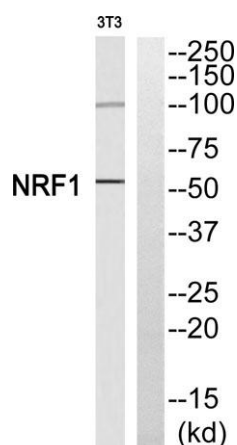
<b>Concentration</b>	1 mg/ml
<b>Observed band</b>	54kD
<b>Human Gene ID</b>	4899
<b>Human Swiss-Prot Number</b>	Q16656
<b>Alternative Names</b>	NRF1; Nuclear respiratory factor 1; NRF-1; Alpha palindromic-binding protein; Alpha-pal

### Background

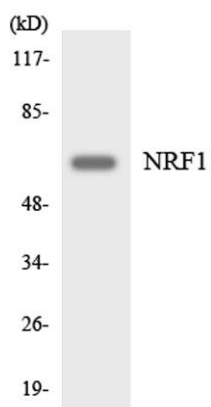
This gene encodes a protein that homodimerizes and functions as a transcription factor which activates the expression of some key metabolic genes regulating cellular growth and nuclear genes required for respiration, heme biosynthesis, and mitochondrial DNA transcription and replication. The protein has also been associated with the regulation of neurite outgrowth. Alternative splicing results in multiple transcript variants. Confusion has occurred in bibliographic databases due to the shared symbol of NRF1 for this gene and for "nuclear factor (erythroid-derived 2)-like 1" which has an official symbol of NFE2L1. [provided by RefSeq, May 2014],



**Western Blot analysis of 3T3 cells using NRF-1 Polyclonal Antibody cells nucleus extracted by Minute TM Cytoplasmic and Nuclear Fractionation kit (SC-003, Invent biotech, MN, USA).**



**Western blot analysis of NRF1 Antibody. The lane on the right is blocked with the NRF1 peptide.**



Western blot analysis of the lysates from HeLa cells using NRF1 antibody.