

Cleaved-Notch 2 (A1734) rabbit pAb**Cat#: orb769282 (Manual)**

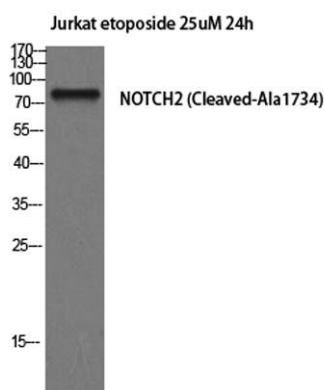
For research use only. Not intended for diagnostic use.

Product Name	Cleaved-Notch 2 (A1734) rabbit pAb
Host species	Rabbit
Applications	WB;ELISA
Species Cross-Reactivity	Human;Mouse;Rat
Recommended dilutions	Western Blot: 1/500 - 1/2000. ELISA: 1/10000. Not yet tested in other applications.
Immunogen	The antiserum was produced against synthesized peptide derived from human NOTCH2. AA range:1715-1764
Specificity	Cleaved-Notch 2 (A1734) Polyclonal Antibody detects endogenous levels of fragment of activated Notch 2 protein resulting from cleavage adjacent to A1734.
Formulation	Liquid in PBS containing 50% glycerol, 0.5% BSA and 0.02% sodium azide..
Storage	Store at -20°C. Avoid repeated freeze-thaw cycles.
Protein Name	Neurogenic locus notch homolog protein 2
Gene Name	NOTCH2
Cellular localization	[Notch 2 extracellular truncation]: Cell membrane ; Single-pass type I membrane protein .; [Notch 2 intracellular domain]: Nucleus . Cytoplasm . Following proteolytical processing NICD is translocated to the nucleus. Retained at the cytoplasm by TCIM (Pub
Purification	The antibody was affinity-purified from rabbit antiserum by affinity-chromatography using epitope-specific immunogen.

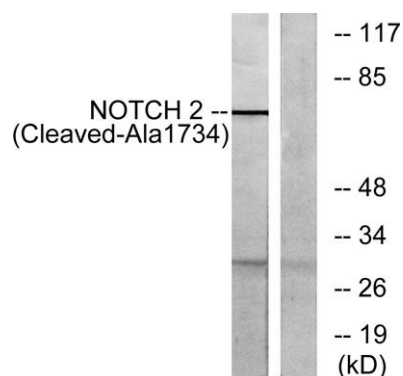
Clonality	Polyclonal
Concentration	1 mg/ml
Observed band	110(cleaved)kD
Human Gene ID	4853
Human Swiss-Prot Number	Q04721
Alternative Names	NOTCH2; Neurogenic locus notch homolog protein 2; Notch 2; hN2

Background

notch 2(NOTCH2) Homo sapiens This gene encodes a member of the Notch family. Members of this Type 1 transmembrane protein family share structural characteristics including an extracellular domain consisting of multiple epidermal growth factor-like (EGF) repeats, and an intracellular domain consisting of multiple, different domain types. Notch family members play a role in a variety of developmental processes by controlling cell fate decisions. The Notch signaling network is an evolutionarily conserved intercellular signaling pathway which regulates interactions between physically adjacent cells. In Drosophila, notch interaction with its cell-bound ligands (delta, serrate) establishes an intercellular signaling pathway that plays a key role in development. Homologues of the notch-ligands have also been identified in human, but precise interactions between these ligands and the human notch homologues remain to be determined. This protein is cle



Western Blot analysis of Jurkat cells using Cleaved-Notch 2 (A1734) Polyclonal Antibody diluted at 1:2000



Western blot analysis of lysates from Jurkat cells, treated with etoposide 25uM 24h, using NOTCH2 (Cleaved-Ala1734) Antibody. The lane on the right is blocked with the synthesized peptide.