

NK-TR rabbit pAb

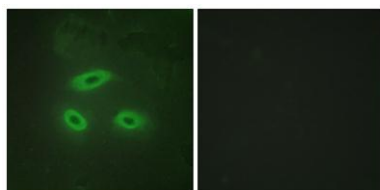
Cat#: orb769268 (Manual)

For research use only. Not intended for diagnostic use.

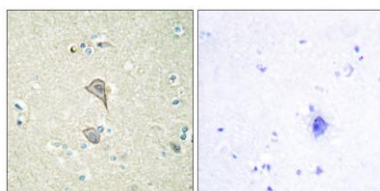
Product Name	NK-TR rabbit pAb
Host species	Rabbit
Applications	IHC;IF;WB;ELISA
Species Cross-Reactivity	Human;Rat;Mouse;
Recommended dilutions	WB 1:500-2000 Immunohistochemistry: 1/100 - 1/300. Immunofluorescence: 1/200 - 1/1000. ELISA: 1/40000. Not yet tested in other applications.
Immunogen	The antiserum was produced against synthesized peptide derived from human NKTR. AA range:784-833
Specificity	NK-TR Polyclonal Antibody detects endogenous levels of NK-TR protein.
Formulation	Liquid in PBS containing 50% glycerol, 0.5% BSA and 0.02% sodium azide..
Storage	Store at -20°C. Avoid repeated freeze-thaw cycles.
Protein Name	NK-tumor recognition protein
Gene Name	NKTR
Cellular localization	Cell membrane .
Purification	The antibody was affinity-purified from rabbit antiserum by affinity-chromatography using epitope-specific immunogen.
Clonality	Polyclonal

Concentration	1 mg/ml
Observed band	
Human Gene ID	4820
Human Swiss-Prot Number	P30414
Alternative Names	NKTR; NK-tumor recognition protein; NK-TR protein; Natural-killer cells cyclophilin-related protein

Background This gene encodes a membrane-anchored protein with a hydrophobic amino terminal domain and a cyclophilin-like PPIase domain. It is present on the surface of natural killer cells and facilitates their binding to targets. Its expression is regulated by IL2 activation of the cells. [provided by RefSeq, Jul 2008],



Immunofluorescence analysis of HeLa cells, using NKTR Antibody. The picture on the right is blocked with the synthesized peptide.



Immunohistochemistry analysis of paraffin-embedded human brain tissue, using NKTR Antibody. The picture on the right is blocked with the synthesized peptide.