

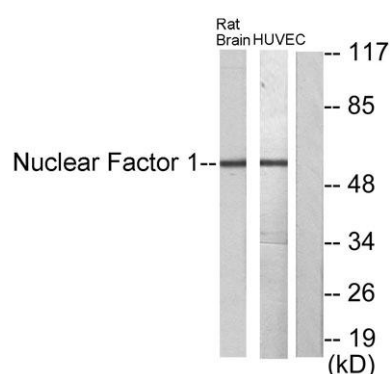
NF-1 rabbit pAb**Cat#: orb769242 (Manual)**

For research use only. Not intended for diagnostic use.

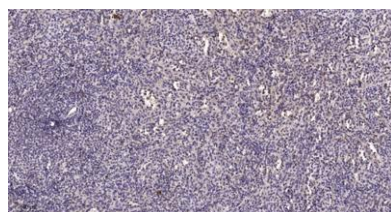
Product Name	NF-1 rabbit pAb
Host species	Rabbit
Applications	WB;IHC;IF;ELISA
Species Cross-Reactivity	Human;Mouse;Rat
Recommended dilutions	Western Blot: 1/500 - 1/2000. Immunohistochemistry: 1/100 - 1/300. ELISA: 1/20000. Not yet tested in other applications.
Immunogen	The antiserum was produced against synthesized peptide derived from human Nuclear Factor 1. AA range:11-60
Specificity	NF-1 Polyclonal Antibody detects endogenous levels of NF-1 protein.
Formulation	Liquid in PBS containing 50% glycerol, 0.5% BSA and 0.02% sodium azide..
Storage	Store at -20°C. Avoid repeated freeze-thaw cycles.
Protein Name	Nuclear factor 1 A-type
Gene Name	NF1A
Cellular localization	Nucleus.
Purification	The antibody was affinity-purified from rabbit antiserum by affinity-chromatography using epitope-specific immunogen.
Clonality	Polyclonal

Concentration	1 mg/ml
Observed band	55kD
Human Gene ID	4774/4781/4782/4784
Human Swiss-Prot Number	Q12857/O00712/P08651/Q14938
Alternative Names	NFIA; KIAA1439; Nuclear factor 1 A-type; NF1-A; Nuclear factor 1/A; CCAAT-box-binding transcription factor; CTF; Nuclear factor I/A; NF-I/A; NFI-A; TGGCA-binding protein; NFIB; Nuclear factor 1 B-type; NF1-B; Nuclear factor 1/B; CCAAT-box-b

Background This gene encodes a member of the NF1 (nuclear factor 1) family of transcription factors. Multiple transcript variants encoding different isoforms have been found for this gene. [provided by RefSeq, Sep 2011],



Western blot analysis of lysates from rat brain and HUVEC cells, using Nuclear Factor 1 Antibody. The lane on the right is blocked with the synthesized peptide.



Immunohistochemical analysis of paraffin-embedded human spleen. 1, Tris-EDTA, pH 9.0 was used for antigen retrieval. 2 Antibody was diluted at 1:200 (4°C overnight). 3, Secondary antibody was diluted at 1:200 (room temperature, 45 min).