

## Neuro D rabbit pAb

**Cat#: orb769236 (Manual)**

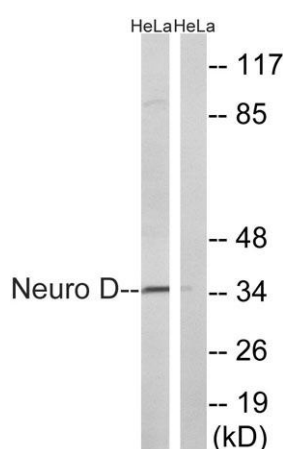
For research use only. Not intended for diagnostic use.

<b>Product Name</b>	Neuro D rabbit pAb
<b>Host species</b>	Rabbit
<b>Applications</b>	WB;ELISA;IHC
<b>Species Cross-Reactivity</b>	Human;Mouse;Rat
<b>Recommended dilutions</b>	WB 1:500-2000;IHC-p 1:50-300; ELISA 2000-20000
<b>Immunogen</b>	The antiserum was produced against synthesized peptide derived from human NEUROD1. AA range:240-289
<b>Specificity</b>	Neuro D Polyclonal Antibody detects endogenous levels of Neuro D protein.
<b>Formulation</b>	Liquid in PBS containing 50% glycerol, 0.5% BSA and 0.02% sodium azide..
<b>Storage</b>	Store at -20°C. Avoid repeated freeze-thaw cycles.
<b>Protein Name</b>	Neurogenic differentiation factor 1
<b>Gene Name</b>	NEUROD1
<b>Cellular localization</b>	Cytoplasm . Nucleus . In pancreatic islet cells, shuttles to the nucleus in response to glucose stimulation (By similarity). Colocalizes with NR0B2 in the nucleus. .
<b>Purification</b>	The antibody was affinity-purified from rabbit antiserum by affinity-chromatography using epitope-specific immunogen.

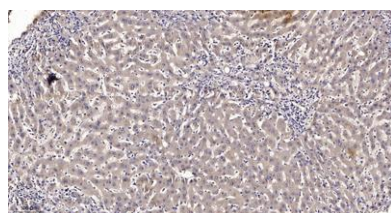
<b>Clonality</b>	Polyclonal
<b>Concentration</b>	1 mg/ml
<b>Observed band</b>	36kD
<b>Human Gene ID</b>	4760
<b>Human Swiss-Prot Number</b>	Q13562
<b>Alternative Names</b>	NEUROD1; BHLHA3; NEUROD; Neurogenic differentiation factor 1; NeuroD; NeuroD1; Class A basic helix-loop-helix protein 3; bHLHa3

### Background

This gene encodes a member of the NeuroD family of basic helix-loop-helix (bHLH) transcription factors. The protein forms heterodimers with other bHLH proteins and activates transcription of genes that contain a specific DNA sequence known as the E-box. It regulates expression of the insulin gene, and mutations in this gene result in type II diabetes mellitus. [provided by RefSeq, Jul 2008],



Western blot analysis of lysates from HeLa cells, using Neuro D Antibody. The lane on the right is blocked with the synthesized peptide.



Immunohistochemical analysis of paraffin-embedded human liver cancer. 1, Antibody was diluted at 1:200(4° overnight). 2, Tris-EDTA,pH9.0 was used for antigen retrieval. 3,Secondary antibody was diluted at 1:200(room temperature, 45min).



Explore. Bioreagents.

[www.biorbyt.com](http://www.biorbyt.com)