

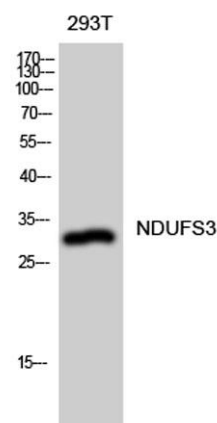
NDUFS3 rabbit pAb**Cat#: orb769225 (Manual)**

For research use only. Not intended for diagnostic use.

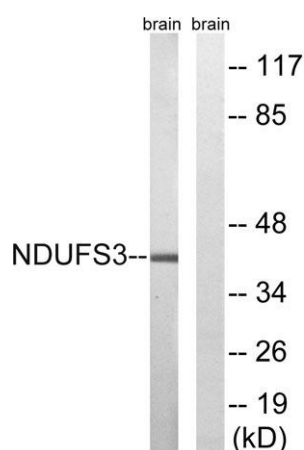
Product Name	NDUFS3 rabbit pAb
Host species	Rabbit
Applications	WB;ELISA
Species Cross-Reactivity	Human;Mouse
Recommended dilutions	Western Blot: 1/500 - 1/2000. ELISA: 1/40000. Not yet tested in other applications.
Immunogen	The antiserum was produced against synthesized peptide derived from human NDUFS3. AA range:117-166
Specificity	NDUFS3 Polyclonal Antibody detects endogenous levels of NDUFS3 protein.
Formulation	Liquid in PBS containing 50% glycerol, 0.5% BSA and 0.02% sodium azide..
Storage	Store at -20°C. Avoid repeated freeze-thaw cycles.
Protein Name	NADH dehydrogenase [ubiquinone] iron-sulfur protein 3 mitochondrial
Gene Name	NDUFS3
Cellular localization	Mitochondrion inner membrane ; Peripheral membrane protein ; Matrix side .
Purification	The antibody was affinity-purified from rabbit antiserum by affinity-chromatography using epitope-specific immunogen.
Clonality	Polyclonal

Concentration	1 mg/ml
Observed band	40kD
Human Gene ID	4722
Human Swiss-Prot Number	O75489
Alternative Names	NDUFS3; NADH dehydrogenase [ubiquinone] iron-sulfur protein 3; mitochondrial; Complex I-30kD; CI-30kD; NADH-ubiquinone oxidoreductase 30 kDa subunit

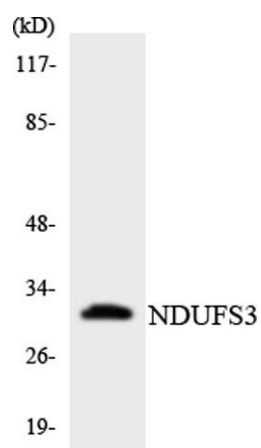
Background This gene encodes one of the iron-sulfur protein (IP) components of mitochondrial NADH:ubiquinone oxidoreductase (complex I). Mutations in this gene are associated with Leigh syndrome resulting from mitochondrial complex I deficiency.[provided by RefSeq, Apr 2009],



Western Blot analysis of 293T cells using NDUFS3 Polyclonal Antibody diluted at 1:500



Western blot analysis of lysates from mouse brain, using NDUFS3 Antibody. The lane on the right is blocked with the synthesized peptide.



Western blot analysis of the lysates from COLO205 cells using NDUF3 antibody.