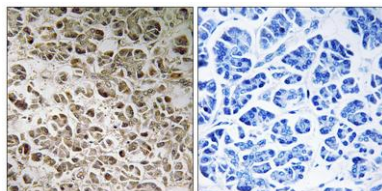


NDUFB1 rabbit pAb**Cat#: orb769219 (Manual)**

For research use only. Not intended for diagnostic use.

Product Name	NDUFB1 rabbit pAb
Host species	Rabbit
Applications	IHC;IF;ELISA
Species Cross-Reactivity	Human;Rat;Mouse;
Recommended dilutions	Immunohistochemistry: 1/100 - 1/300. ELISA: 1/20000. Not yet tested in other applications.
Immunogen	The antiserum was produced against synthesized peptide derived from human NDUFB1. AA range:7-56
Specificity	NDUFB1 Polyclonal Antibody detects endogenous levels of NDUFB1 protein.
Formulation	Liquid in PBS containing 50% glycerol, 0.5% BSA and 0.02% sodium azide..
Storage	Store at -20°C. Avoid repeated freeze-thaw cycles.
Protein Name	NADH dehydrogenase [ubiquinone] 1 beta subcomplex subunit 1
Gene Name	NDUFB1
Cellular localization	Mitochondrion inner membrane ; Single-pass membrane protein ; Matrix side .
Purification	The antibody was affinity-purified from rabbit antiserum by affinity-chromatography using epitope-specific immunogen.
Clonality	Polyclonal

Concentration	1 mg/ml
Observed band	
Human Gene ID	4707
Human Swiss-Prot Number	O75438
Alternative Names	NDUFB1; NADH dehydrogenase [ubiquinone] 1 beta subcomplex subunit 1; Complex I-MNLL; CI-MNLL; NADH-ubiquinone oxidoreductase MNLL subunit
Background	function:Accessory subunit of the mitochondrial membrane respiratory chain NADH dehydrogenase (Complex I), that is believed to be not involved in catalysis. Complex I functions in the transfer of electrons from NADH to the respiratory chain. The immediate electron acceptor for the enzyme is believed to be ubiquinone.,similarity:Belongs to the complex I NDUFB1 subunit family.,subunit:Complex I is composed of 45 different subunits.,



Immunohistochemistry analysis of paraffin-embedded human pancreas, using NDUFB1 Antibody. The picture on the right is blocked with the synthesized peptide.