

**Myosin VA rabbit pAb****Cat#: orb769194 (Manual)**

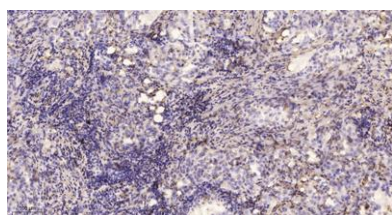
For research use only. Not intended for diagnostic use.

<b>Product Name</b>	Myosin VA rabbit pAb
<b>Host species</b>	Rabbit
<b>Applications</b>	WB;IHC
<b>Species Cross-Reactivity</b>	Human;Mouse;Rat
<b>Recommended dilutions</b>	WB 1:500-2000;IHC-p 1:50-300
<b>Immunogen</b>	The antiserum was produced against synthesized peptide derived from human MYO5A. AA range:1784-1833
<b>Specificity</b>	Myosin VA Polyclonal Antibody detects endogenous levels of Myosin VA protein.
<b>Formulation</b>	Liquid in PBS containing 50% glycerol, 0.5% BSA and 0.02% sodium azide..
<b>Storage</b>	Store at -20°C. Avoid repeated freeze-thaw cycles.
<b>Protein Name</b>	Unconventional myosin-Va
<b>Gene Name</b>	MYO5A
<b>Cellular localization</b>	ruffle,photoreceptor outer segment,cytoplasm,lysosome,early endosome,late endosome,peroxisome,endoplasmic reticulum,Golgi apparatus,cytosol,intermediate filament,actin filament,membrane,myosin complex,gr
<b>Purification</b>	The antibody was affinity-purified from rabbit antiserum by affinity-chromatography using epitope-specific immunogen.

<b>Clonality</b>	Polyclonal
<b>Concentration</b>	1 mg/ml
<b>Observed band</b>	220kD
<b>Human Gene ID</b>	4644
<b>Human Swiss-Prot Number</b>	Q9Y4I1
<b>Alternative Names</b>	MYO5A; MYH12; Unconventional myosin-Va; Dilute myosin heavy chain; non-muscle; Myosin heavy chain 12; Myosin-12; Myoxin

## Background

This gene is one of three myosin V heavy-chain genes, belonging to the myosin gene superfamily. Myosin V is a class of actin-based motor proteins involved in cytoplasmic vesicle transport and anchorage, spindle-pole alignment and mRNA translocation. The protein encoded by this gene is abundant in melanocytes and nerve cells. Mutations in this gene cause Griscelli syndrome type-1 (GS1), Griscelli syndrome type-3 (GS3) and neuroectodermal melanolysosomal disease, or Elejalde disease. Multiple alternatively spliced transcript variants encoding different isoforms have been reported, but the full-length nature of some variants has not been determined. [provided by RefSeq, Dec 2008],



**Immunohistochemical analysis of paraffin-embedded human lung cancer. 1, Antibody was diluted at 1:200(4° overnight). 2, Tris-EDTA,pH9.0 was used for antigen retrieval. 3,Secondary antibody was diluted at 1:200(room temperature, 45min).**