

ATBF1 rabbit pAb**Cat#: orb769187 (Manual)**

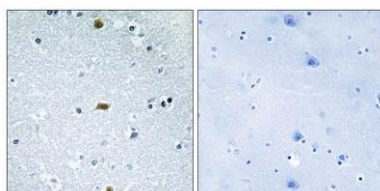
For research use only. Not intended for diagnostic use.

Product Name	ATBF1 rabbit pAb
Host species	Rabbit
Applications	IHC;IF;ELISA
Species Cross-Reactivity	Human;Mouse
Recommended dilutions	Immunohistochemistry: 1/100 - 1/300. ELISA: 1/10000. Not yet tested in other applications.
Immunogen	The antiserum was produced against synthesized peptide derived from human ZFH3. AA range:761-810
Specificity	ATBF1 Polyclonal Antibody detects endogenous levels of ATBF1 protein.
Formulation	Liquid in PBS containing 50% glycerol, 0.5% BSA and 0.02% sodium azide..
Storage	Store at -20°C. Avoid repeated freeze-thaw cycles.
Protein Name	Zinc finger homeobox protein 3
Gene Name	ZFH3
Cellular localization	Nucleus . Cytoplasm . Translocates from the cytoplasm to the nucleus following TGF-beta stimulation. Expressed in nuclear body (NB)-like dots in the nucleus some of which overlap or closely associate with PML body. .
Purification	The antibody was affinity-purified from rabbit antiserum by affinity-chromatography using epitope-specific immunogen.

Clonality	Polyclonal
Concentration	1 mg/ml
Observed band	
Human Gene ID	463
Human Swiss-Prot Number	Q15911
Alternative Names	ZFHX3; ATBF1; Zinc finger homeobox protein 3; AT motif-binding factor; AT-binding transcription factor 1; Alpha-fetoprotein enhancer-binding protein; Zinc finger homeodomain protein 3; ZFH-3

Background

This gene encodes a transcription factor with multiple homeodomains and zinc finger motifs, and regulates myogenic and neuronal differentiation. The encoded protein suppresses expression of the alpha-fetoprotein gene by binding to an AT-rich enhancer motif. The protein has also been shown to negatively regulate c-Myb, and transactivate the cell cycle inhibitor cyclin-dependent kinase inhibitor 1A (also known as p21CIP1). This gene is reported to function as a tumor suppressor in several cancers, and sequence variants of this gene are also associated with atrial fibrillation. Multiple transcript variants expressed from alternate promoters and encoding different isoforms have been found for this gene. [provided by RefSeq, Sep 2009],



Immunohistochemistry analysis of paraffin-embedded human brain tissue, using ZFHX3 Antibody. The picture on the right is blocked with the synthesized peptide.