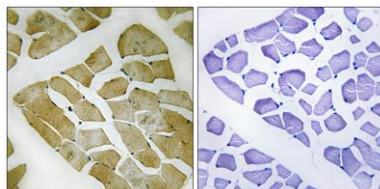


**MYH4 rabbit pAb****Cat#: orb769186 (Manual)**

For research use only. Not intended for diagnostic use.

<b>Product Name</b>	MYH4 rabbit pAb
<b>Host species</b>	Rabbit
<b>Applications</b>	IHC;IF;ELISA
<b>Species Cross-Reactivity</b>	Human;Rat;Mouse;
<b>Recommended dilutions</b>	Immunohistochemistry: 1/100 - 1/300. ELISA: 1/5000. Not yet tested in other applications.
<b>Immunogen</b>	The antiserum was produced against synthesized peptide derived from human MYH4. AA range:1677-1726
<b>Specificity</b>	MYH4 Polyclonal Antibody detects endogenous levels of MYH4 protein.
<b>Formulation</b>	Liquid in PBS containing 50% glycerol, 0.5% BSA and 0.02% sodium azide..
<b>Storage</b>	Store at -20°C. Avoid repeated freeze-thaw cycles.
<b>Protein Name</b>	Myosin-4
<b>Gene Name</b>	MYH4
<b>Cellular localization</b>	Cytoplasm, myofibril. Thick filaments of the myofibrils.
<b>Purification</b>	The antibody was affinity-purified from rabbit antiserum by affinity-chromatography using epitope-specific immunogen.
<b>Clonality</b>	Polyclonal

<b>Concentration</b>	1 mg/ml
<b>Observed band</b>	
<b>Human Gene ID</b>	4622
<b>Human Swiss-Prot Number</b>	Q9Y623
<b>Alternative Names</b>	MYH4; Myosin-4; Myosin heavy chain 2b; MyHC-2b; Myosin heavy chain 4; Myosin heavy chain IIb; MyHC-IIb; Myosin heavy chain; skeletal muscle, fetal
<b>Background</b>	<p>domain:The rodlike tail sequence is highly repetitive, showing cycles of a 28-residue repeat pattern composed of 4 heptapeptides, characteristic for alpha-helical coiled coils.,function:Muscle contraction.,miscellaneous:Each myosin heavy chain can be split into 1 light meromyosin (LMM) and 1 heavy meromyosin (HMM). It can later be split further into 2 globular subfragments (S1) and 1 rod-shaped subfragment (S2).,similarity:Contains 1 IQ domain.,similarity:Contains 1 myosin head-like domain.,subcellular location:Thick filaments of the myofibrils.,subunit:Muscle myosin is a hexameric protein that consists of 2 heavy chain subunits (MHC), 2 alkali light chain subunits (MLC) and 2 regulatory light chain subunits (MLC-2).,</p>



**Immunohistochemistry analysis of paraffin-embedded human skeletal muscle, using MYH4 Antibody. The picture on the right is blocked with the synthesized peptide.**