

A-Myb rabbit pAb

Cat#: orb769175 (Manual)

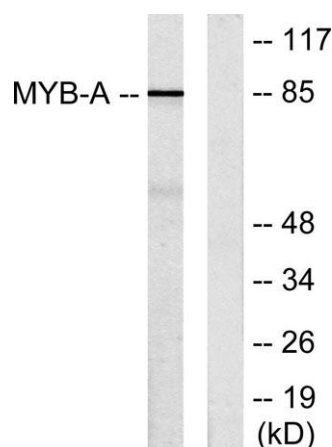
For research use only. Not intended for diagnostic use.

Product Name	A-Myb rabbit pAb
Host species	Rabbit
Applications	WB;ELISA
Species Cross-Reactivity	Human;Mouse
Recommended dilutions	Western Blot: 1/500 - 1/2000. ELISA: 1/10000. Not yet tested in other applications.
Immunogen	The antiserum was produced against synthesized peptide derived from human MYB-A. AA range:231-280
Specificity	A-Myb Polyclonal Antibody detects endogenous levels of A-Myb protein.
Formulation	Liquid in PBS containing 50% glycerol, 0.5% BSA and 0.02% sodium azide..
Storage	Store at -20°C. Avoid repeated freeze-thaw cycles.
Protein Name	Myb-related protein A
Gene Name	MYBL1
Cellular localization	Nucleus .
Purification	The antibody was affinity-purified from rabbit antiserum by affinity-chromatography using epitope-specific immunogen.
Clonality	Polyclonal

Concentration	1 mg/ml
Observed band	85kD
Human Gene ID	4603
Human Swiss-Prot Number	P10243
Alternative Names	MYBL1; AMYB; Myb-related protein A; A-Myb; Myb-like protein 1

Background

function: Strong transcriptional activator; DNA-binding protein that specifically recognize the sequence 5'-YAAC[GT]G-3'. Could have a role in the proliferation and/or differentiation of neurogenic, spermatogenic and B-lymphoid cells., **similarity:** Contains 3 HTH myb-type DNA-binding domains., **subunit:** Component of the DREAM complex (also named LINC complex) at least composed of E2F4, E2F5, LIN9, LIN37, LIN52, LIN54, MYBL1, MYBL2, RBL1, RBL2, RBBP4, TFDP1 and TFDP2. The complex exists in quiescent cells where it represses cell cycle-dependent genes. It dissociates in S phase when LIN9, LIN37, LIN52 and LIN54 form a subcomplex that binds to MYBL2., **tissue specificity:** Expressed in a variety of lymphoid and solid tumor lines cultured in vitro.,



Western blot analysis of lysates from LOVO cells, using MYB-A Antibody. The lane on the right is blocked with the synthesized peptide.