

c-Myb (phospho Ser532) rabbit pAb**Cat#: orb769172 (Manual)**

For research use only. Not intended for diagnostic use.

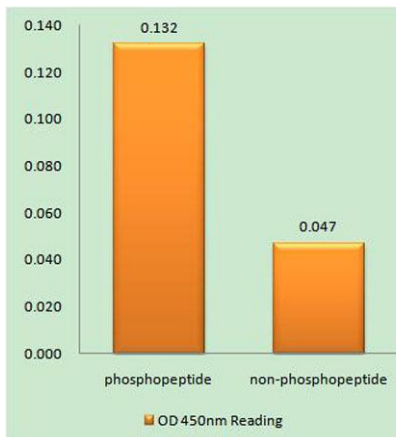
Product Name	c-Myb (phospho Ser532) rabbit pAb
Host species	Rabbit
Applications	IHC;IF;ELISA
Species Cross-Reactivity	Human;Mouse
Recommended dilutions	Immunohistochemistry: 1/100 - 1/300. ELISA: 1/5000. Not yet tested in other applications.
Immunogen	The antiserum was produced against synthesized peptide derived from human Myb around the phosphorylation site of Ser532. AA range:496-545
Specificity	Phospho-c-Myb (S532) Polyclonal Antibody detects endogenous levels of c-Myb protein only when phosphorylated at S532.
Formulation	Liquid in PBS containing 50% glycerol, 0.5% BSA and 0.02% sodium azide..
Storage	Store at -20°C. Avoid repeated freeze-thaw cycles.
Protein Name	Transcriptional activator Myb
Gene Name	MYB
Cellular localization	Nucleus .
Purification	The antibody was affinity-purified from rabbit antiserum by affinity-chromatography using epitope-specific immunogen.
Clonality	Polyclonal

Explore. Bioreagents.

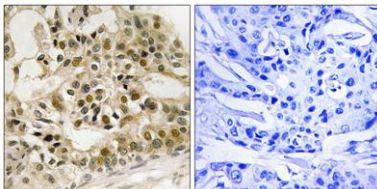
Concentration	1 mg/ml
Observed band	
Human Gene ID	4602
Human Swiss-Prot Number	P10242
Alternative Names	MYB; Transcriptional activator Myb; Proto-oncogene c-Myb

Background

This gene encodes a protein with three HTH DNA-binding domains that functions as a transcription regulator. This protein plays an essential role in the regulation of hematopoiesis. This gene may be aberrantly expressed or rearranged or undergo translocation in leukemias and lymphomas, and is considered to be an oncogene. Alternative splicing results in multiple transcript variants. [provided by RefSeq, Jan 2016],



Enzyme-Linked Immunosorbent Assay (Phospho-ELISA) for Immunogen Phosphopeptide (Phospho-left) and Non-Phosphopeptide (Phospho-right), using Myb (Phospho-Ser532) Antibody



Immunohistochemistry analysis of paraffin-embedded human breast carcinoma, using Myb (Phospho-Ser532) Antibody. The picture on the right is blocked with the phospho peptide.