

**Moesin/Ezrin/Radixin rabbit pAb****Cat#: orb769159 (Manual)**

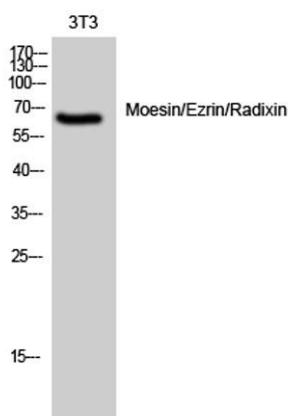
For research use only. Not intended for diagnostic use.

<b>Product Name</b>	Moesin/Ezrin/Radixin rabbit pAb
<b>Host species</b>	Rabbit
<b>Applications</b>	WB;IHC;IF;ELISA
<b>Species Cross-Reactivity</b>	Human;Mouse;Rat
<b>Recommended dilutions</b>	Western Blot: 1/500 - 1/2000. Immunohistochemistry: 1/100 - 1/300. ELISA: 1/20000. Not yet tested in other applications.
<b>Immunogen</b>	The antiserum was produced against synthesized peptide derived from human Moesin/Ezrin/Radixin. AA range:524-573
<b>Specificity</b>	Moesin/Ezrin/Radixin Polyclonal Antibody detects endogenous levels of Moesin/Ezrin/Radixin protein.
<b>Formulation</b>	Liquid in PBS containing 50% glycerol, 0.5% BSA and 0.02% sodium azide..
<b>Storage</b>	Store at -20°C. Avoid repeated freeze-thaw cycles.
<b>Protein Name</b>	Moesin
<b>Gene Name</b>	MSN
<b>Cellular localization</b>	Cell membrane ; Peripheral membrane protein ; Cytoplasmic side . Cytoplasm, cytoskeleton . Apical cell membrane ; Peripheral membrane protein ; Cytoplasmic side . Cell projection, microvillus membrane ; Peripheral membrane protein ; Cytoplasmic side . Cell projection, microvillus . Phosphorylated form is enriched in microvilli-like structures at apical membrane. Increased cell membrane localization of both phosphorylated and non-phosphorylated forms seen after thrombin treatment (By similarity). Localizes at the uropods of T lymphoblasts. .

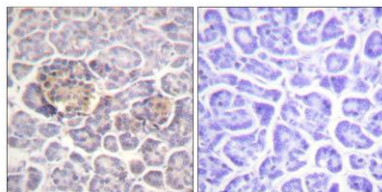
<b>Purification</b>	The antibody was affinity-purified from rabbit antiserum by affinity-chromatography using epitope-specific immunogen.
<b>Clonality</b>	Polyclonal
<b>Concentration</b>	1 mg/ml
<b>Observed band</b>	67kD
<b>Human Gene ID</b>	4478/5962
<b>Human Swiss-Prot Number</b>	P26038/P35241/P15311
<b>Alternative Names</b>	MSN; Moesin; Membrane-organizing extension spike protein; RDX; Radixin; EZR; VIL2; Ezrin; Cytovillin; Villin-2; p81

**Background**

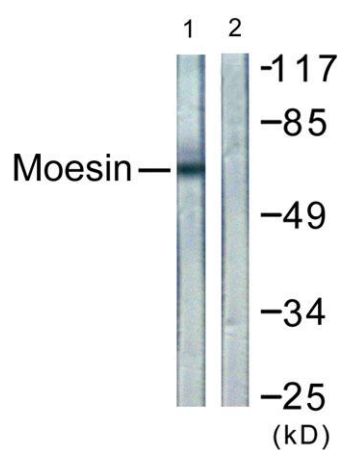
Moesin (for membrane-organizing extension spike protein) is a member of the ERM family which includes ezrin and radixin. ERM proteins appear to function as cross-linkers between plasma membranes and actin-based cytoskeletons. Moesin is localized to filopodia and other membranous protrusions that are important for cell-cell recognition and signaling and for cell movement. [provided by RefSeq, Jul 2008],



**Western Blot analysis of 3T3 cells using Moesin/Ezrin/Radixin Polyclonal Antibody diluted at 1:2000**



**Immunohistochemistry analysis of paraffin-embedded human pancreas tissue, using Moesin/Ezrin/Radixin Antibody. The picture on the right is blocked with the synthesized peptide.**



**Western blot analysis of lysates from NIH/3T3 cells, using Moesin/Ezrin/Radixin Antibody. The lane on the right is blocked with the synthesized peptide.**