

AKAP 2 rabbit pAb**Cat#: orb769157 (Manual)**

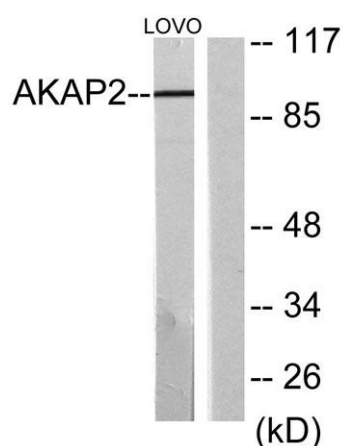
For research use only. Not intended for diagnostic use.

Product Name	AKAP 2 rabbit pAb
Host species	Rabbit
Applications	WB;ELISA
Species Cross-Reactivity	Human;Rat;Mouse;
Recommended dilutions	Western Blot: 1/500 - 1/2000. ELISA: 1/20000. Not yet tested in other applications.
Immunogen	The antiserum was produced against synthesized peptide derived from human AKAP2. AA range:71-120
Specificity	AKAP 2 Polyclonal Antibody detects endogenous levels of AKAP 2 protein.
Formulation	Liquid in PBS containing 50% glycerol, 0.5% BSA and 0.02% sodium azide..
Storage	Store at -20°C. Avoid repeated freeze-thaw cycles.
Protein Name	A-kinase anchor protein 2
Gene Name	AKAP2
Cellular localization	
Purification	The antibody was affinity-purified from rabbit antiserum by affinity-chromatography using epitope-specific immunogen.
Clonality	Polyclonal

Concentration	1 mg/ml
Observed band	96kD
Human Gene ID	445815/11217
Human Swiss-Prot Number	Q9Y2D5
Alternative Names	AKAP2; KIAA0920; PRKA2; A-kinase anchor protein 2; AKAP-2; AKAP-KL; Protein kinase A-anchoring protein 2; PRKA2

Background

The protein encoded by this gene binds to the regulatory subunit of protein kinase A and is found associated with the actin cytoskeleton. The encoded protein mediates signals carried by cAMP and may be involved in creating polarity in certain signaling processes. Three transcript variants encoding different isoforms have been found for this gene. [provided by RefSeq, Mar 2011],



Western blot analysis of lysates from LOVO cells, using AKAP2 Antibody. The lane on the right is blocked with the synthesized peptide.