

**MSH2 rabbit pAb****Cat#: orb769156 (Manual)**

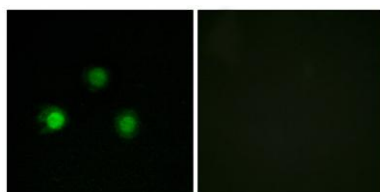
For research use only. Not intended for diagnostic use.

<b>Product Name</b>	MSH2 rabbit pAb
<b>Host species</b>	Rabbit
<b>Applications</b>	IHC;IF;ELISA
<b>Species Cross-Reactivity</b>	Human;Mouse;Rat
<b>Recommended dilutions</b>	Immunohistochemistry: 1/100 - 1/300. Immunofluorescence: 1/200 - 1/1000. ELISA: 1/20000. Not yet tested in other applications.
<b>Immunogen</b>	The antiserum was produced against synthesized peptide derived from human MSH2. AA range:541-590
<b>Specificity</b>	MSH2 Polyclonal Antibody detects endogenous levels of MSH2 protein.
<b>Formulation</b>	Liquid in PBS containing 50% glycerol, 0.5% BSA and 0.02% sodium azide..
<b>Storage</b>	Store at -20°C. Avoid repeated freeze-thaw cycles.
<b>Protein Name</b>	DNA mismatch repair protein Msh2
<b>Gene Name</b>	MSH2
<b>Cellular localization</b>	Nucleus . Chromosome .
<b>Purification</b>	The antibody was affinity-purified from rabbit antiserum by affinity-chromatography using epitope-specific immunogen.
<b>Clonality</b>	Polyclonal

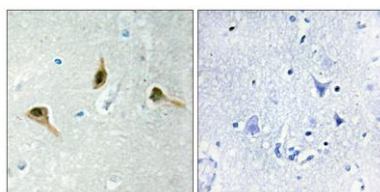
<b>Concentration</b>	1 mg/ml
<b>Observed band</b>	100kD
<b>Human Gene ID</b>	4436
<b>Human Swiss-Prot Number</b>	P43246
<b>Alternative Names</b>	MSH2; DNA mismatch repair protein Msh2; hMSH2; MutS protein homolog 2

### Background

This locus is frequently mutated in hereditary nonpolyposis colon cancer (HNPCC). When cloned, it was discovered to be a human homolog of the E. coli mismatch repair gene mutS, consistent with the characteristic alterations in microsatellite sequences (RER+ phenotype) found in HNPCC. Two transcript variants encoding different isoforms have been found for this gene. [provided by RefSeq, Apr 2012],



**Immunofluorescence analysis of HUVEC cells, using MSH2 Antibody. The picture on the right is blocked with the synthesized peptide.**



**Immunohistochemistry analysis of paraffin-embedded human brain tissue, using MSH2 Antibody. The picture on the right is blocked with the synthesized peptide.**