

ASCL1 rabbit pAb**Cat#: orb769121 (Manual)**

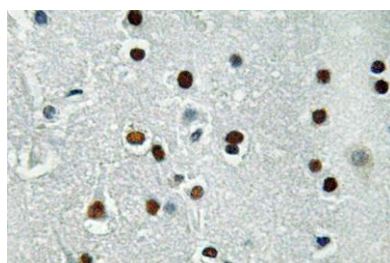
For research use only. Not intended for diagnostic use.

Product Name	ASCL1 rabbit pAb
Host species	Rabbit
Applications	WB;IHC;IF;ELISA
Species Cross-Reactivity	Human;Mouse;Rat
Recommended dilutions	Western Blot: 1/500 - 1/2000. Immunohistochemistry: 1/100 - 1/300. ELISA: 1/40000. Not yet tested in other applications.
Immunogen	The antiserum was produced against synthesized peptide derived from human ASCL1. AA range:109-158
Specificity	ASCL1 Polyclonal Antibody detects endogenous levels of ASCL1 protein.
Formulation	Liquid in PBS containing 50% glycerol, 0.5% BSA and 0.02% sodium azide..
Storage	Store at -20°C. Avoid repeated freeze-thaw cycles.
Protein Name	Achaete-scute homolog 1
Gene Name	ASCL1
Cellular localization	Nucleus .
Purification	The antibody was affinity-purified from rabbit antiserum by affinity-chromatography using epitope-specific immunogen.
Clonality	Polyclonal

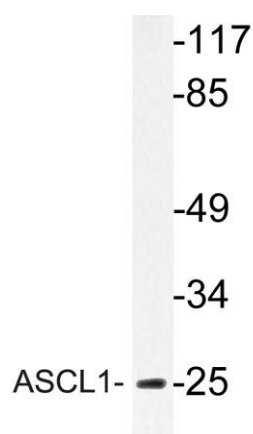
Concentration	1 mg/ml
Observed band	25kD
Human Gene ID	429
Human Swiss-Prot Number	P50553
Alternative Names	ASCL1; ASH1; BHLHA46; HASH1; Achaete-scute homolog 1; ASH-1; hASH1; Class A basic helix-loop-helix protein 46; bHLHa46

Background

achaete-scute family bHLH transcription factor 1(ASCL1) Homo sapiens
This gene encodes a member of the basic helix-loop-helix (BHLH) family of transcription factors. The protein activates transcription by binding to the E box (5'-CANNTG-3'). Dimerization with other BHLH proteins is required for efficient DNA binding. This protein plays a role in the neuronal commitment and differentiation and in the generation of olfactory and autonomic neurons. Mutations in this gene may contribute to the congenital central hypoventilation syndrome (CCHS) phenotype in rare cases. [provided by RefSeq, Jul 2008],



Immunohistochemistry analysis of ASCL1 antibody in paraffin-embedded human brain tissue.



Western blot analysis of lysate from Jurkat cells, using ASCL1 antibody.



Explore. Bioreagents.

www.biorbyt.com