

Malic enzyme 1 rabbit pAb**Cat#: orb769091 (Manual)**

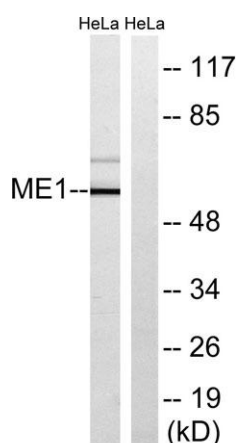
For research use only. Not intended for diagnostic use.

Product Name	Malic enzyme 1 rabbit pAb
Host species	Rabbit
Applications	WB;ELISA
Species Cross-Reactivity	Human;Mouse;Rat
Recommended dilutions	Western Blot: 1/500 - 1/2000. ELISA: 1/40000. Not yet tested in other applications.
Immunogen	The antiserum was produced against synthesized peptide derived from human ME1. AA range:468-517
Specificity	Malic enzyme 1 Polyclonal Antibody detects endogenous levels of Malic enzyme 1 protein.
Formulation	Liquid in PBS containing 50% glycerol, 0.5% BSA and 0.02% sodium azide..
Storage	Store at -20°C. Avoid repeated freeze-thaw cycles.
Protein Name	NADP-dependent malic enzyme
Gene Name	ME1
Cellular localization	Cytoplasm .
Purification	The antibody was affinity-purified from rabbit antiserum by affinity-chromatography using epitope-specific immunogen.
Clonality	Polyclonal

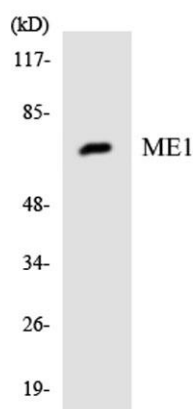
Concentration	1 mg/ml
Observed band	64kD
Human Gene ID	4199
Human Swiss-Prot Number	P48163
Alternative Names	ME1; NADP-dependent malic enzyme; NADP-ME; Malic enzyme 1

Background

This gene encodes a cytosolic, NADP-dependent enzyme that generates NADPH for fatty acid biosynthesis. The activity of this enzyme, the reversible oxidative decarboxylation of malate, links the glycolytic and citric acid cycles. The regulation of expression for this gene is complex. Increased expression can result from elevated levels of thyroid hormones or by higher proportions of carbohydrates in the diet. [provided by RefSeq, Jul 2008],



Western blot analysis of lysates from HeLa cells, using ME1 Antibody. The lane on the right is blocked with the synthesized peptide.



Western blot analysis of the lysates from HeLa cells using ME1 antibody.