

MAZ rabbit pAb

Cat#: orb769072 (Manual)

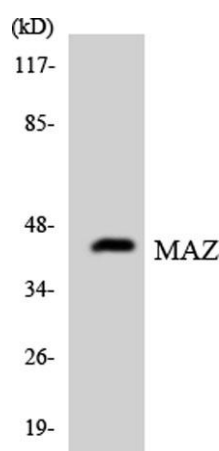
For research use only. Not intended for diagnostic use.

Product Name	MAZ rabbit pAb
Host species	Rabbit
Applications	WB;ELISA;IHC
Species Cross-Reactivity	Human;Mouse;Rat
Recommended dilutions	WB 1:500-2000;IHC-p 1:50-300; ELISA 2000-20000
Immunogen	The antiserum was produced against synthesized peptide derived from human MAZ. AA range:159-208
Specificity	MAZ Polyclonal Antibody detects endogenous levels of MAZ protein.
Formulation	Liquid in PBS containing 50% glycerol, 0.5% BSA and 0.02% sodium azide..
Storage	Store at -20°C. Avoid repeated freeze-thaw cycles.
Protein Name	Myc-associated zinc finger protein
Gene Name	MAZ
Cellular localization	Nucleus . In brains of Alzheimer disease patients, present in a plaque-like structures.
Purification	The antibody was affinity-purified from rabbit antiserum by affinity-chromatography using epitope-specific immunogen.
Clonality	Polyclonal

Concentration	1 mg/ml
Observed band	48kD
Human Gene ID	4150
Human Swiss-Prot Number	P56270
Alternative Names	MAZ; ZNF801; Myc-associated zinc finger protein; MAZI; Pur-1; Purine-binding transcription factor; Transcription factor Zif87; ZF87; Zinc finger protein 801

Background

function: May function as a transcription factor with dual roles in transcription initiation and termination. Binds to two sites, ME1a1 and ME1a2, within the c-myc promoter having greater affinity for the former. Also binds to multiple G/C-rich sites within the promoter of the Sp1 family of transcription factors. similarity: Contains 6 C2H2-type zinc fingers. subcellular location: In brains of Alzheimer disease patients, present in a plaque-like structures. subunit: Interacts with BPTF. tissue specificity: Present in kidney, liver and brain. In the brain, highest levels are found in motor cortex and midfrontal cortex (at protein level).



Western blot analysis of the lysates from HepG2 cells using MAZ antibody.